

Independent Expert Engineering Investigation and Review Panel

Report on Mount Polley Tailings Storage Facility Breach

Appendix C: DRAWINGS

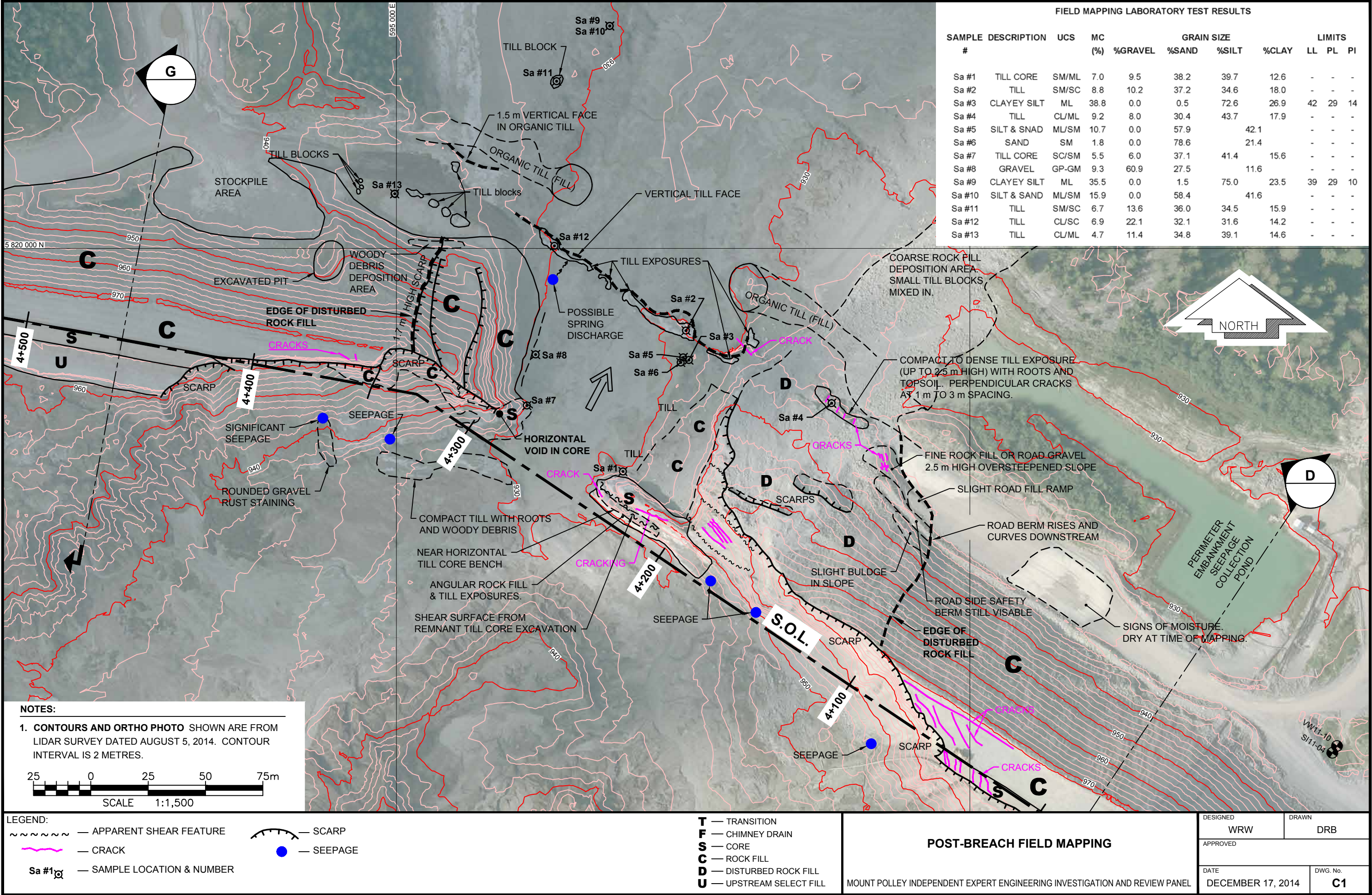
Drawing C1: Post-Breach Field Mapping – Site Plan

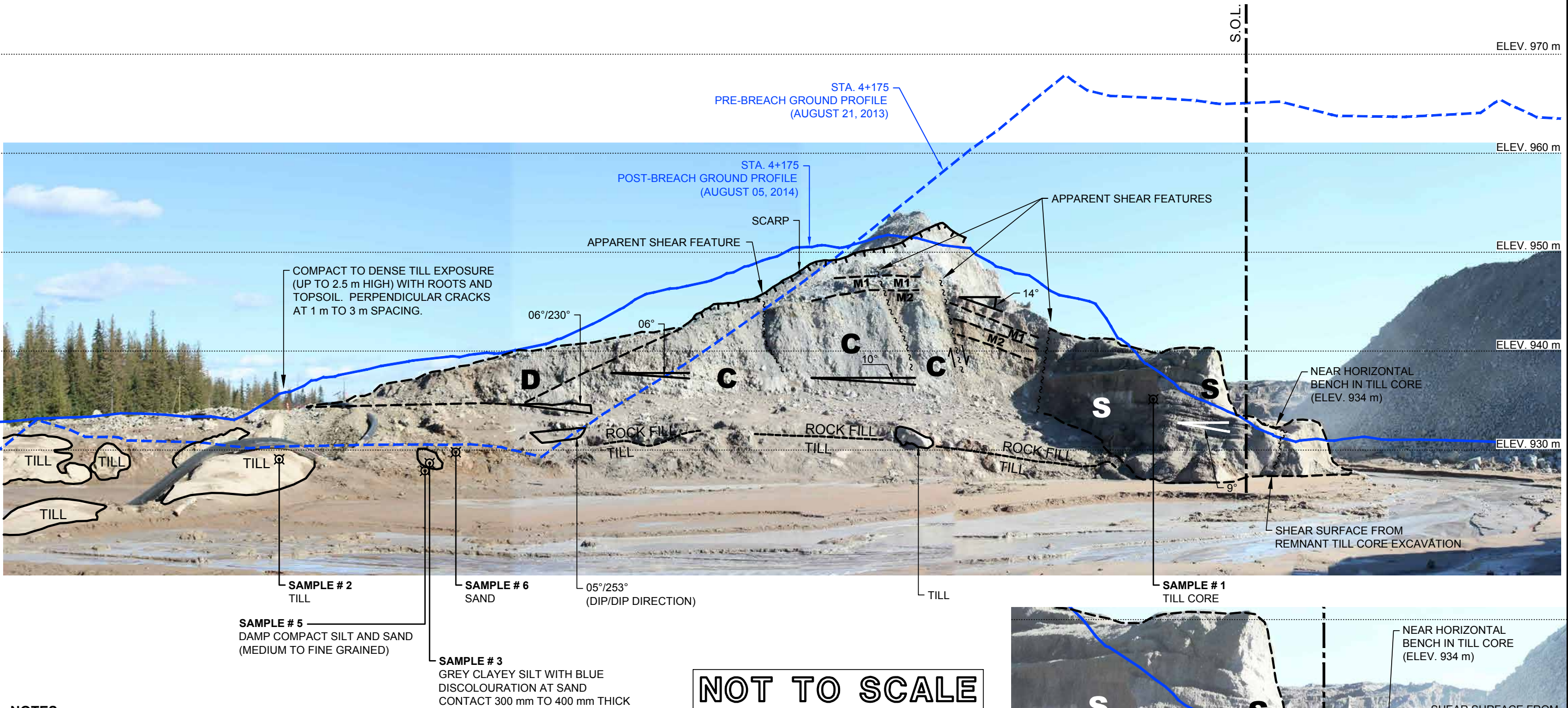
Drawing C2: Right Abutment Field Mapping Notes

Drawing C3: Right Abutment Field Mapping & Zoning at KP Section G (Sta. 4+300)

Drawing C4: Left Abutment Field Mapping Notes

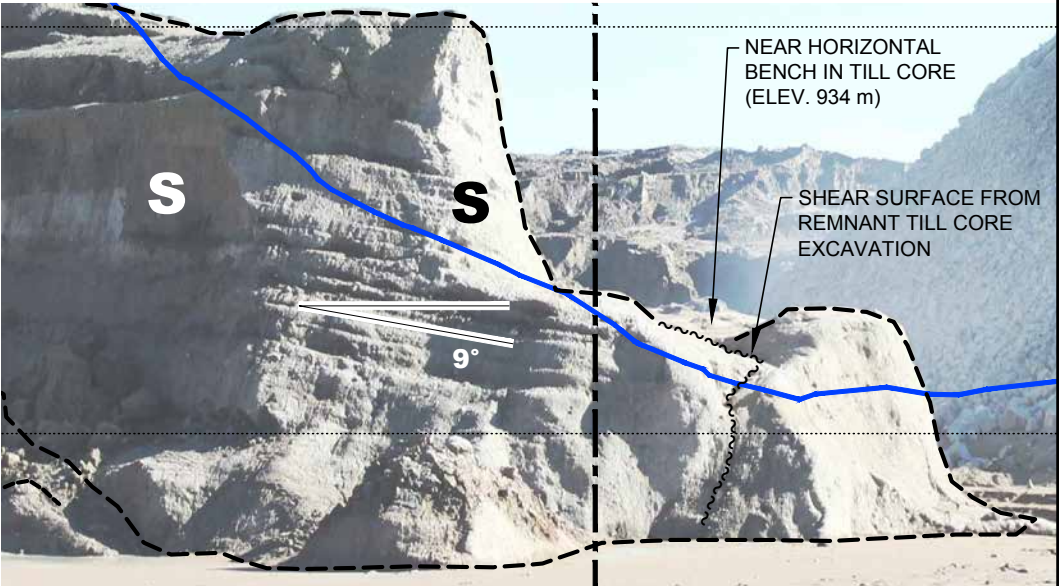
Drawing C5: Left Abutment Field Mapping & Zoning at KP Section G (Sta. 4+300)





NOT TO SCALE

- NOTES:**
- POST-BREACH GROUND PROFILE** - FROM LIDAR SURVEY DATED AUGUST 5, 2014.
 - PRE-BREACH GROUND PROFILE** - FROM LIDAR SURVEY DATED AUGUST 21, 2013.
 - PANORAMA** - IMAGE STITCHED FROM FOUR IMAGES SHOT SEPT. 4, 2014. IT HAS BEEN SCALED AND STRETCHED TO BEST FIT AND SHOULD BE VIEWED AS APPROXIMATE ONLY.
 - ZONING AT KP SECTION G (STA. 4+300) WAS DEVELOPED BASED ON THE FOLLOWING:
 - BETWEEN STAGE 1A/B AND STAGE 3C (APPROXIMATE ELEVATION 944 m) - AS-BUILT SECTIONS BY KP AT STATION 3+715 (SECTION 2 ON AS-BUILT DRAWINGS IN MP00019, 00012, 10032, 00072 & 00038).
 - BETWEEN STAGE 4 AND STAGE 6B (APPROXIMATE ELEVATION 958 m) - AS-BUILT SECTIONS BY KP AT STATION 3+985 (SECTION 1 ON AS-BUILT DRAWINGS IN MP00031, 00033, 00034 & 00036)
 - BETWEEN STAGE 7 AND 9 (APPROXIMATE ELEVATION 966 m) - AS-BUILT SECTIONS BY AMEC AT STATION 3+985 (SECTION D ON AS-BUILT DRAWINGS IN MP00041, 00047 & 00044)
 - FINAL PRE-BREACH ZONE C ROCKFILL SHELL SLOPE BASED ON 2013 LIDAR SURVEY
 - ZONE U AND TAILINGS BEACH SURFACE ELEVATION ESTIMATED BY AVERAGING POST-BREACH LIDAR SURVEY AT LOCATIONS EITHER SIDE OF BREACH AREA AWAY FROM FAILURE SCARPS WITHIN THE TAILINGS.

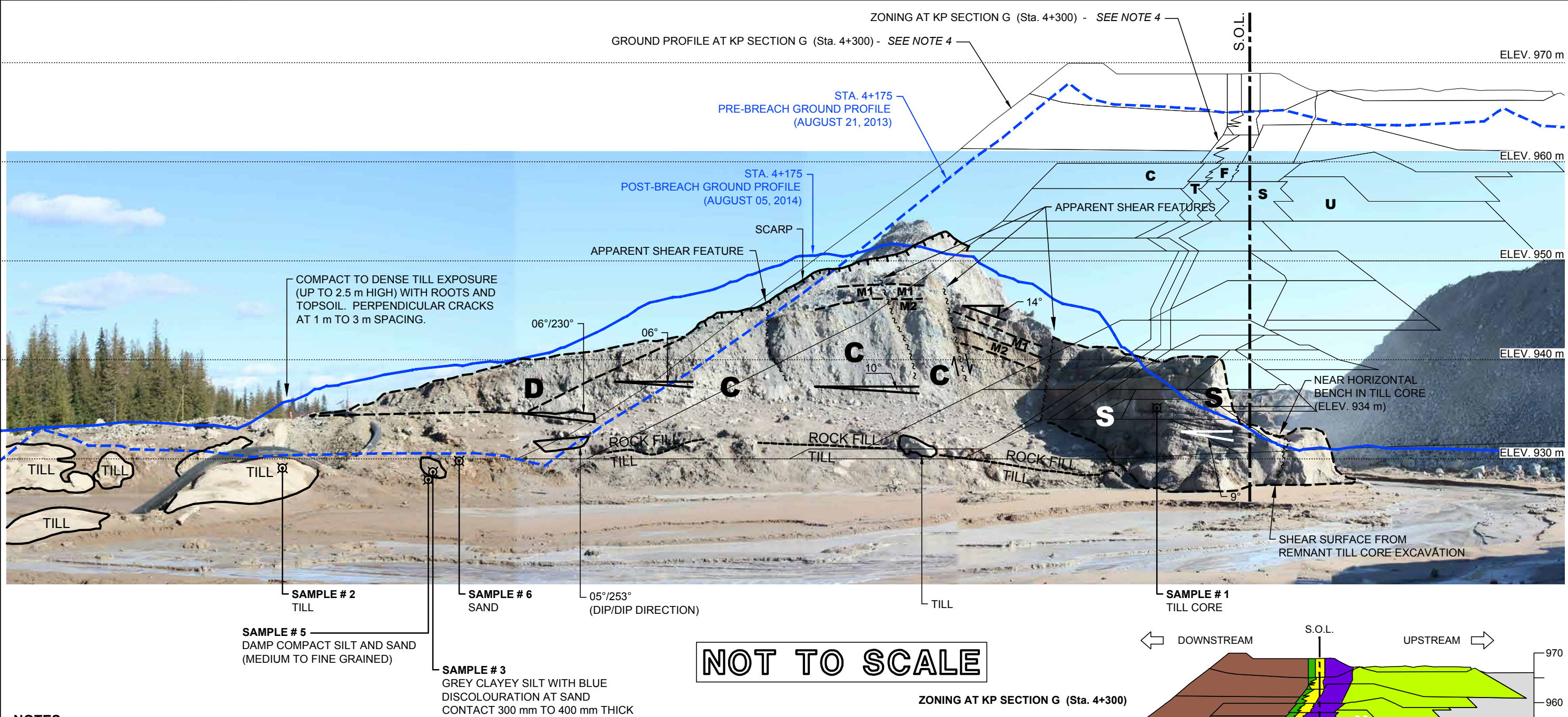


LEGEND:

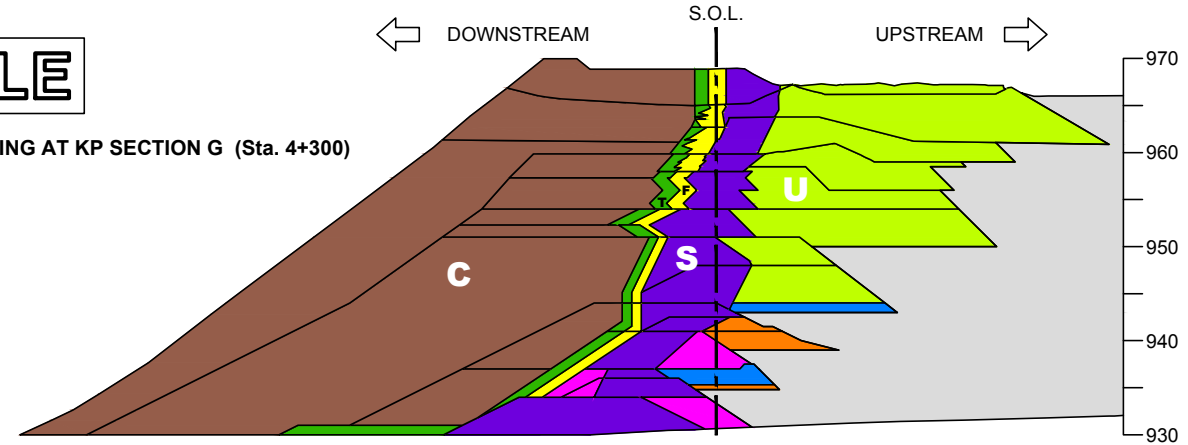
- ~~~~~ — APPARENT SHEAR FEATURE
- — CRACK
- SAMPLE # 1 TILL CORE — SAMPLE LOCATION & NUMBER
- M1 — SCARP
- 10° — MEASURED DIP ANGLE
- — SEEPAGE

T — TRANSITION
F — CHIMNEY DRAIN
S — CORE
C — ROCK FILL
D — DISTURBED ROCK FILL
U — UPSTREAM SELECT FILL

| RIGHT ABUTMENT FIELD MAPPING NOTES | | DESIGNED | DRAWN |
|--|--|-------------------|----------|
| | | WRW | DRB |
| | | APPROVED | |
| | | DATE | DWG. No. |
| MOUNT POLLEY INDEPENDENT EXPERT ENGINEERING INVESTIGATION AND REVIEW PANEL | | DECEMBER 17, 2014 | C2 |



- NOTES:**
1. **POST-BREACH GROUND PROFILE** - FROM LIDAR SURVEY DATED AUGUST 5, 2014.
 2. **PRE-BREACH GROUND PROFILE** - FROM LIDAR SURVEY DATED AUGUST 21, 2013.
 3. **PANORAMA** - IMAGE STITCHED FROM FOUR IMAGES SHOT SEPT. 4, 2014. IT HAS BEEN SCALED AND STRETCHED TO BEST FIT AND SHOULD BE VIEWED AS APPROXIMATE ONLY.
 4. **ZONING AT KP SECTION G (STA. 4+300)** WAS DEVELOPED BASED ON THE FOLLOWING:
 - a. BETWEEN STAGE 1A/B AND STAGE 3C (APPROXIMATE ELEVATION 944 m) - AS-BUILT SECTIONS BY KP AT STATION 3+715 (SECTION 2 ON AS-BUILT DRAWINGS IN MP00019, 00012, 10032, 00072 & 00038).
 - b. BETWEEN STAGE 4 AND STAGE 6B (APPROXIMATE ELEVATION 958 m) - AS-BUILT SECTIONS BY KP AT STATION 3+985 (SECTION 1 ON AS-BUILT DRAWINGS IN MP00031, 00033, 00034 & 00036).
 - c. BETWEEN STAGE 7 AND 9 (APPROXIMATE ELEVATION 966 m) - AS-BUILT SECTIONS BY AMEC AT STATION 3+985 (SECTION D ON AS-BUILT DRAWINGS IN MP00041, 00047 & 00044).
 - d. FINAL PRE-BREACH ZONE C ROCKFILL SHELL SLOPE BASED ON 2013 LIDAR SURVEY
 - e. ZONE U AND TAILINGS BEACH SURFACE ELEVATION ESTIMATED BY AVERAGING POST-BREACH LIDAR SURVEY AT LOCATIONS EITHER SIDE OF BREACH AREA AWAY FROM FAILURE SCARPS WITHIN THE TAILINGS.

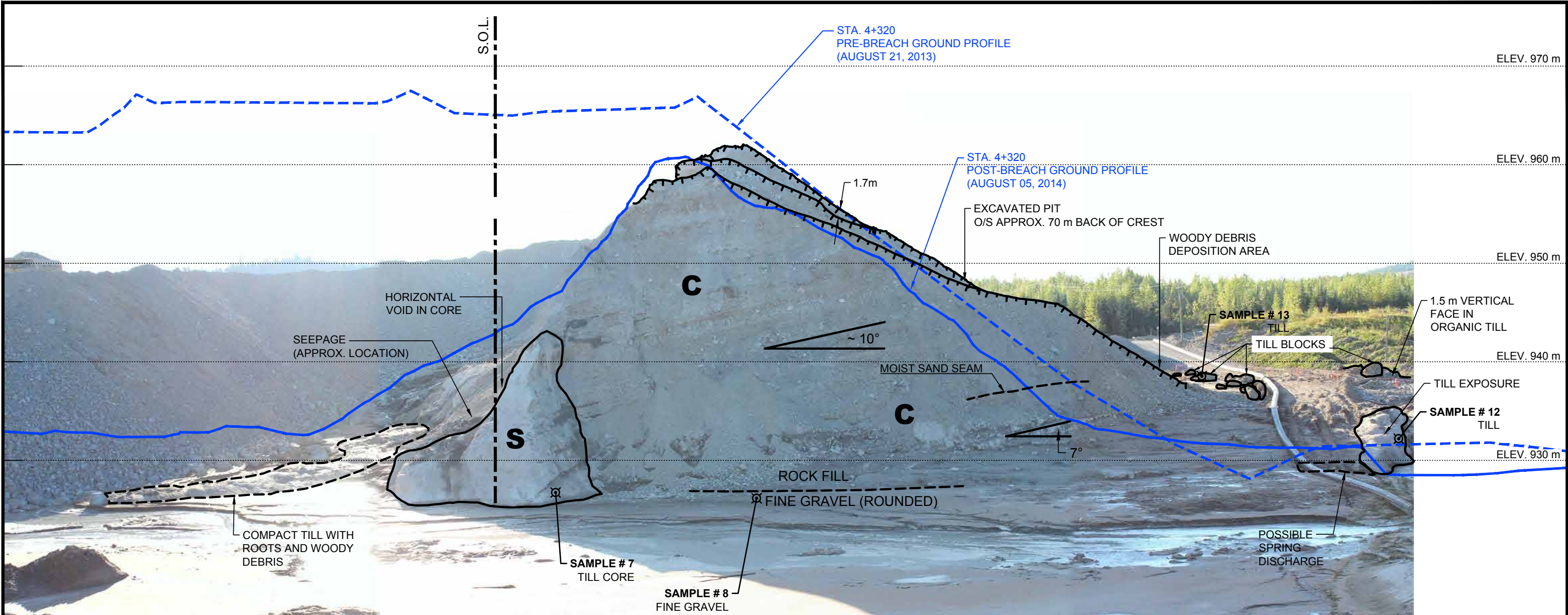


- LEGEND:**
- ~ ~ ~ ~ APPARENT SHEAR FEATURE
 - CRACK
 - SAMPLE # 1 TILL CORE
 - SAMPLE LOCATION & NUMBER
 - SCARP
 - M1 MARKER BED NO.
 - MEASURED DIP ANGLE
 - SEEPAGE

- T** — TRANSITION
F — CHIMNEY DRAIN
S — CORE
C — ROCK FILL
D — DISTURBED ROCK FILL
U — UPSTREAM SELECT FILL

- LEGEND:**
- CORE (ZONE S)
 - TRANSITION (ZONE T)
 - COARSE BEARING LAYER (ZONE CBL)
 - ROCK (ZONE C)
 - FILL (ZONE B)
 - CHIMNEY DRAIN (ZONE F)
 - SELECT TAILINGS FILL (ZONE U)
 - CYCLONE SAND (ZONE CS)

| RIGHT ABUTMENT FIELD MAPPING NOTES & ZONING AT KP SECTION G (4+300) | | DESIGNED WRW | DRAWN DRB |
|--|--|---------------------------|----------------|
| MOUNT POLLEY INDEPENDENT EXPERT ENGINEERING INVESTIGATION AND REVIEW PANEL | | APPROVED | |
| | | DATE DECEMBER 17, 2014 | DWG. No. C3 |



NOT TO SCALE

- NOTES:**
- POST-BREACH GROUND PROFILE** - FROM LIDAR SURVEY DATED AUGUST 5, 2014.
 - PRE-BREACH GROUND PROFILE** - FROM LIDAR SURVEY DATED AUGUST 21, 2013.
 - PANORAMA** - IMAGE STITCHED FROM FOUR IMAGES SHOT SEPT. 4, 2014. IT HAS BEEN SCALED AND STRETCHED TO BEST FIT AND SHOULD BE VIEWED AS APPROXIMATE ONLY.
 - ZONING AT KP SECTION G (STA. 4+300) WAS DEVELOPED BASED ON THE FOLLOWING:
 - BETWEEN STAGE 1A/B AND STAGE 3C (APPROXIMATE ELEVATION 944 m) - AS-BUILT SECTIONS BY KP AT STATION 3+715 (SECTION 2 ON AS-BUILT DRAWINGS IN MP00019, 00012, 10032, 00072 & 00038).
 - BETWEEN STAGE 4 AND STAGE 6B (APPROXIMATE ELEVATION 958 m) - AS-BUILT SECTIONS BY KP AT STATION 3+985 (SECTION 1 ON AS-BUILT DRAWINGS IN MP00031, 00033, 00034 & 00036)
 - BETWEEN STAGE 7 AND 9 (APPROXIMATE ELEVATION 966 m) - AS-BUILT SECTIONS BY AMEC AT STATION 3+985 (SECTION D ON AS-BUILT DRAWINGS IN MP00041, 00047 & 00044)
 - FINAL PRE-BREACH ZONE C ROCKFILL SHELL SLOPE BASED ON 2013 LIDAR SURVEY
 - ZONE U AND TAILINGS BEACH SURFACE ELEVATION ESTIMATED BY AVERAGING POST-BREACH LIDAR SURVEY AT LOCATIONS EITHER SIDE OF BREACH AREA AWAY FROM FAILURE SCARPS WITHIN THE TAILINGS.

LEGEND:

~~~~~ — APPARENT SHEAR FEATURE  
——— — CRACK  
SAMPLE # 1 — SAMPLE LOCATION & NUMBER  
TILL CORE

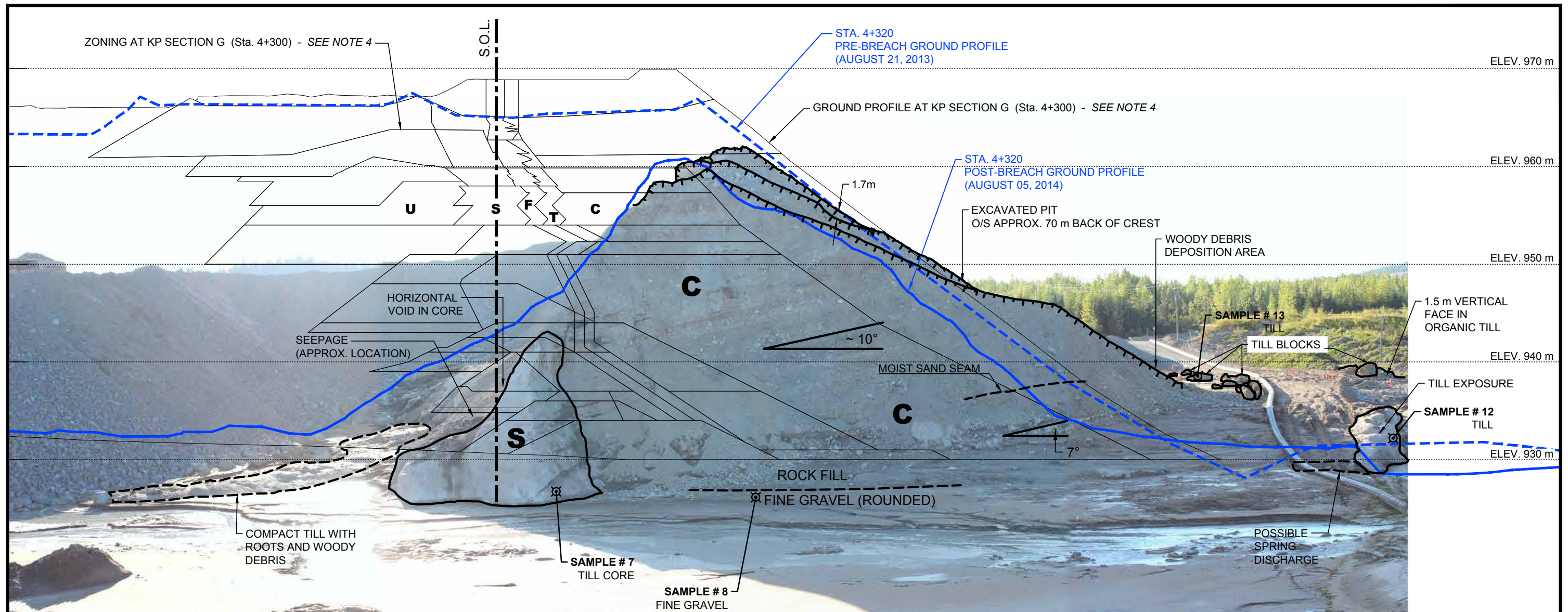
SCARP  
M1 — MARKER BED NO.  
10° — MEASURED DIP ANGLE  
● — SEEPAGE

**T** — TRANSITION  
**F** — CHIMNEY DRAIN  
**S** — CORE  
**C** — ROCK FILL  
**D** — DISTURBED ROCK FILL  
**U** — UPSTREAM SELECT FILL

**LEFT ABUTMENT FIELD MAPPING NOTES**



MOUNT POLLEY INDEPENDENT EXPERT ENGINEERING INVESTIGATION AND REVIEW PANEL

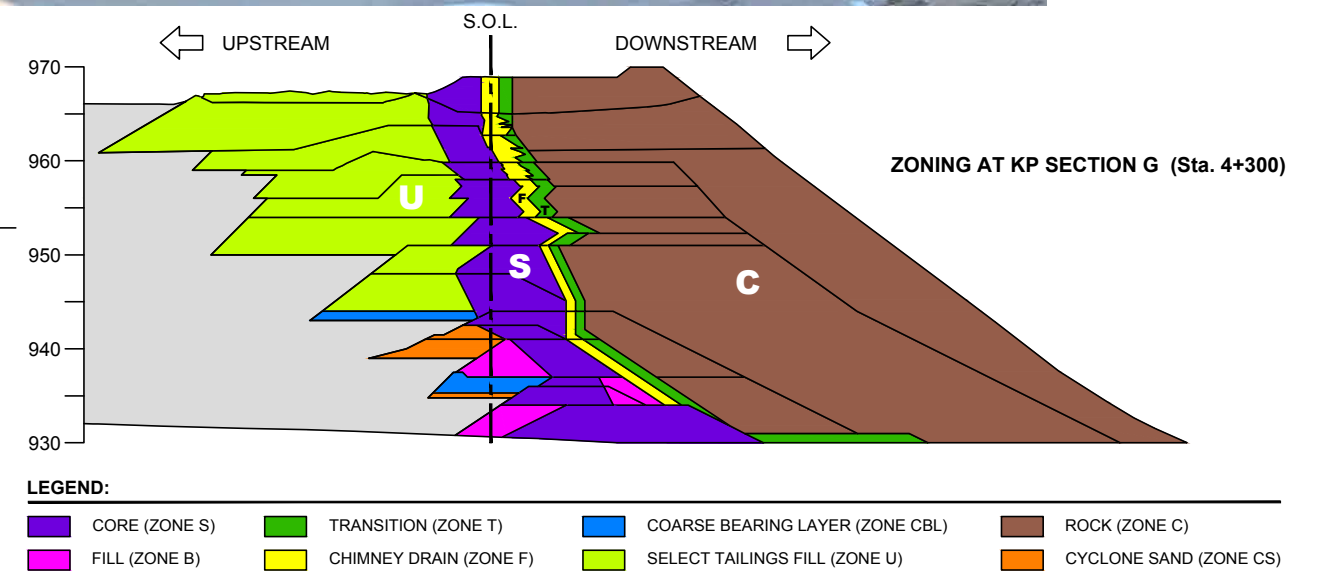
|                           |                       |
|---------------------------|-----------------------|
| DESIGNED<br>WRW           | DRAWN<br>DRB          |
| APPROVED                  |                       |
| DATE<br>DECEMBER 17, 2014 | DWG. No.<br><b>C4</b> |



NOT TO SCALE

**NOTES:**

1.  **POST-BREACH GROUND PROFILE** - FROM LIDAR SURVEY DATED AUGUST 5, 2014.
2.  **PRE-BREACH GROUND PROFILE** - FROM LIDAR SURVEY DATED AUGUST 21, 2013.
3. **PANORAMA** - IMAGE STITCHED FROM FOUR IMAGES SHOT SEPT. 4, 2014. IT HAS BEEN SCALED AND STRETCHED TO BEST FIT AND SHOULD BE VIEWED AS APPROXIMATE ONLY.
4. **ZONING AT KP SECTION G (STA. 4+300) WAS DEVELOPED BASED ON THE FOLLOWING:**
  - a. BETWEEN STAGE 1A/B AND STAGE 3C (APPROXIMATE ELEVATION 944 m) - AS-BUILT SECTIONS BY KP AT STATION 3+715 (SECTION 2 ON AS-BUILT DRAWINGS IN MP00019, 00012, 10032, 00072 & 00038).
  - b. BETWEEN STAGE 4 AND STAGE 6B (APPROXIMATE ELEVATION 958 m) - AS-BUILT SECTIONS BY KP AT STATION 3+985 (SECTION 1 ON AS-BUILT DRAWINGS IN MP00031, 00033, 00034 & 00036)
  - c. BETWEEN STAGE 7 AND 9 (APPROXIMATE ELEVATION 966 m) - AS-BUILT SECTIONS BY AMEC AT STATION 3+985 (SECTION D ON AS-BUILT DRAWINGS IN MP00041, 00047 & 00044)
  - d. FINAL PRE-BREACH ZONE C ROCKFILL SHELL SLOPE BASED ON 2013 LIDAR SURVEY
  - e. ZONE U AND TAILINGS BEACH SURFACE ELEVATION ESTIMATED BY AVERAGING POST-BREACH LIDAR SURVEY AT LOCATIONS EITHER SIDE OF BREACH AREA AWAY FROM FAILURE SCARPS WITHIN THE TAILINGS.



LEGEND:

~ ~ ~ ~ — APPARENT SHEAR FEATURE  
~~~~~ — CRACK

SAMPLE # 1 — SAMPLE LOCATION
TILL CORE & NUMBER

— SCARP

M1 — MARKER BED NO.

$\angle 10^\circ$ — MEASURED DIP ANGLE

— SEEPAGE

T — TRANSITION
F — CHIMNEY DRAIN
S — CORE
C — ROCK FILL
D — DISTURBED ROCK FILL
U — UPSTREAM SELECT FILL

**LEFT ABUTMENT FIELD MAPPING NOTES
& ZONING AT KP SECTION G (Sta.4+300)**

MOUNT POLLEY INDEPENDENT EXPERT ENGINEERING INVESTIGATION AND REVIEW PANEL

| | |
|-------------------------------|---------------------------|
| DESIGNED WRW | DRAWN DRB |
| APPROVED | |
| DATE DECEMBER 17, 2014 | DWG. No. C5 |