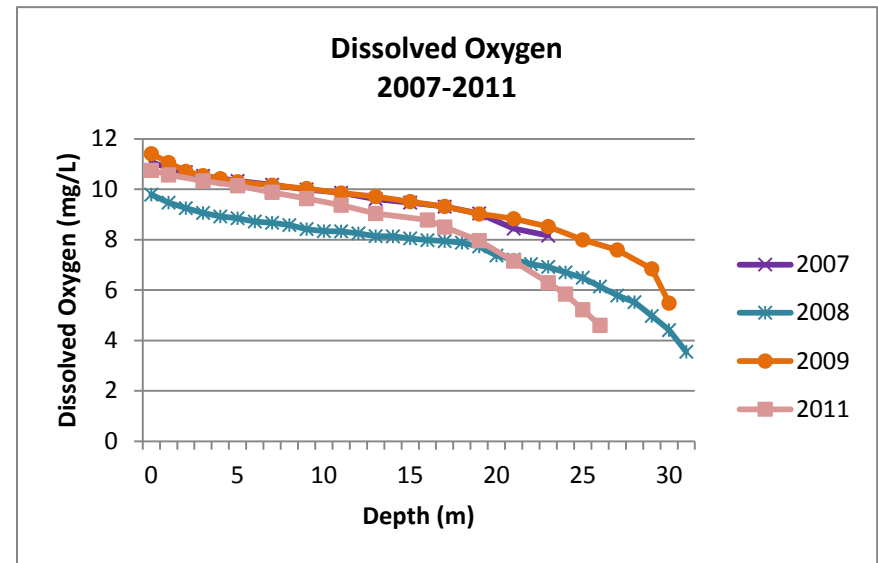
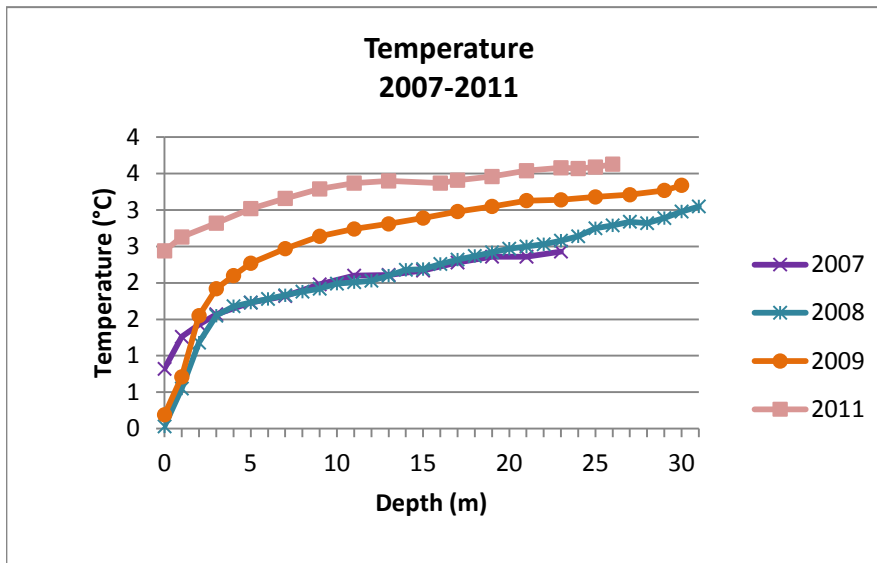
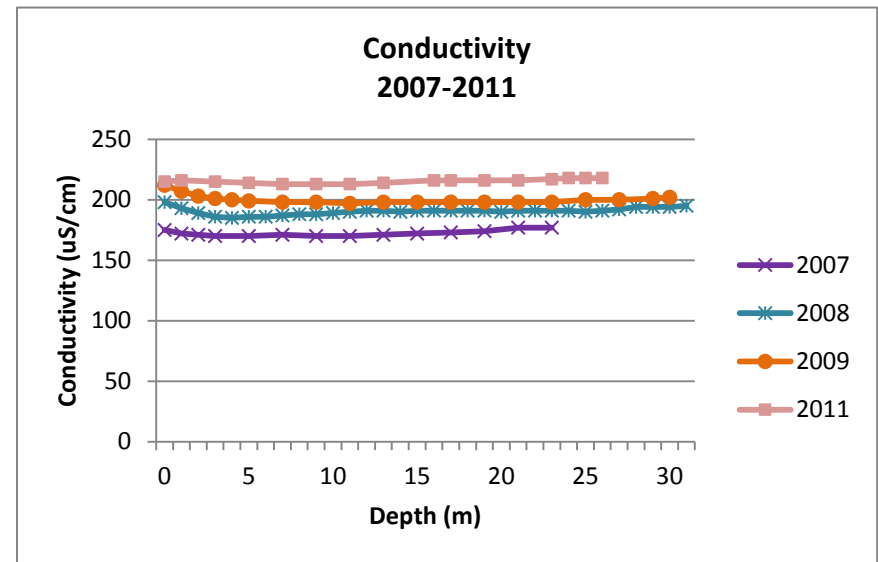
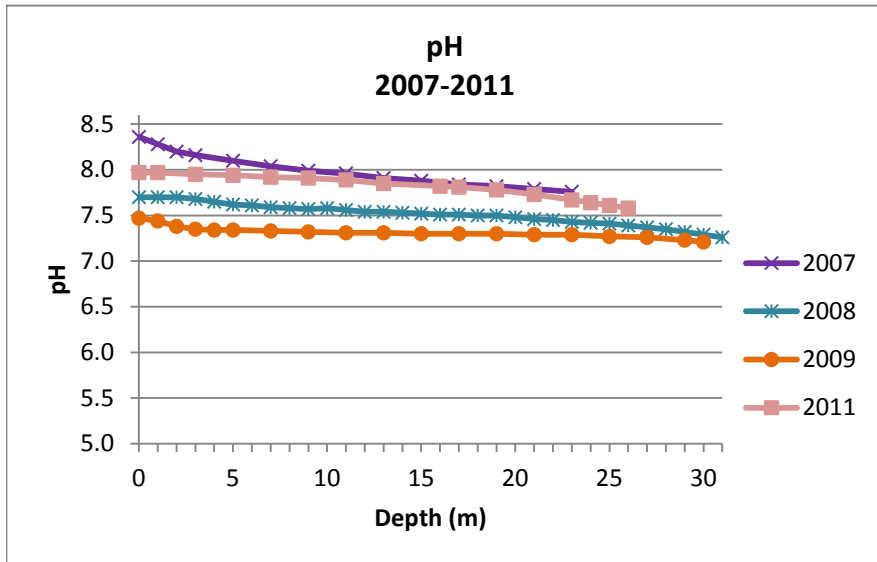
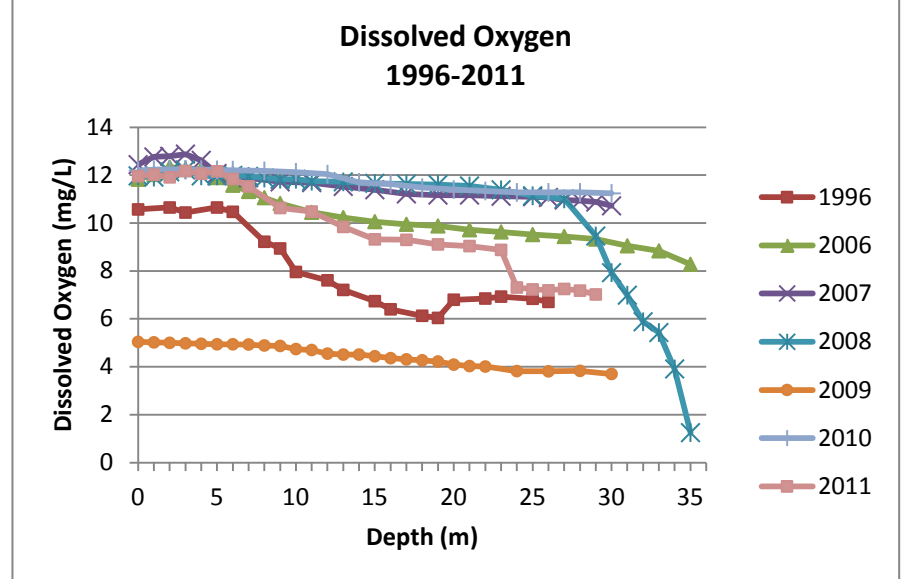
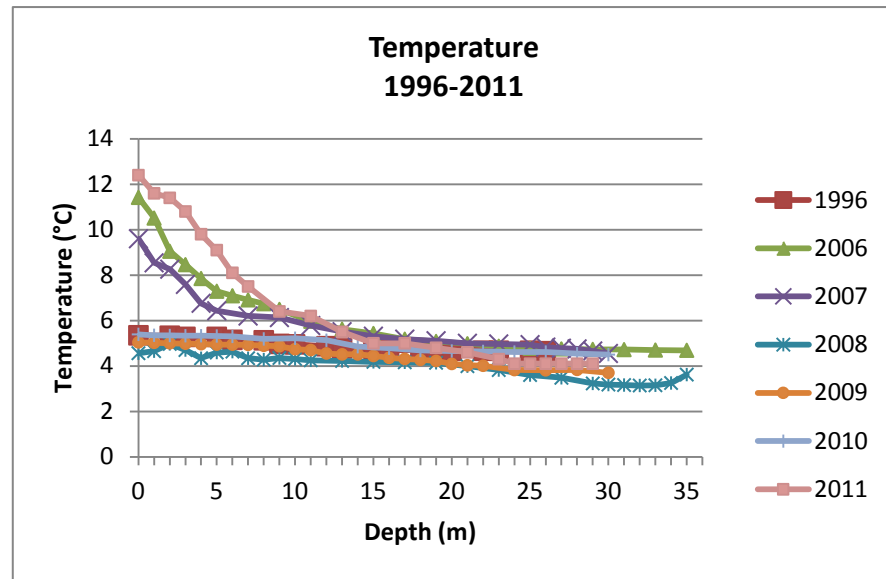
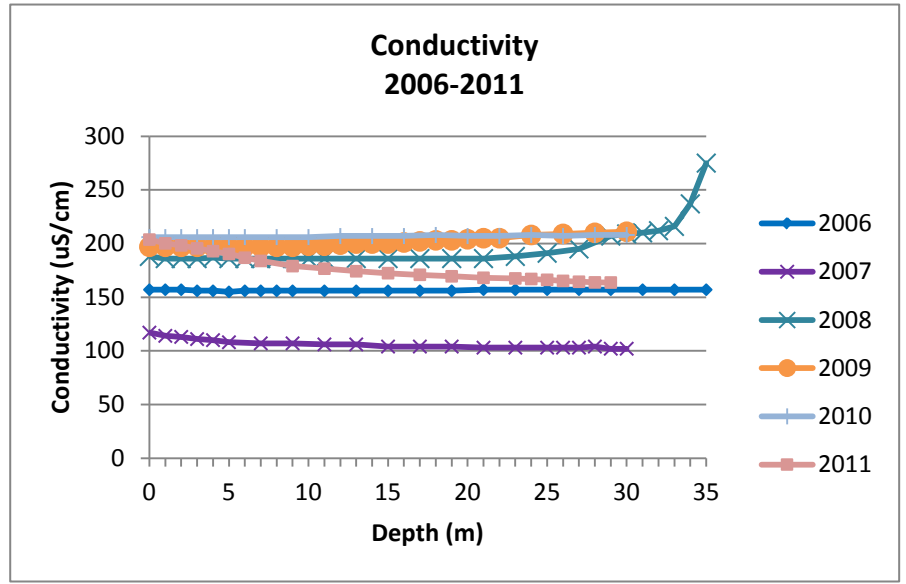
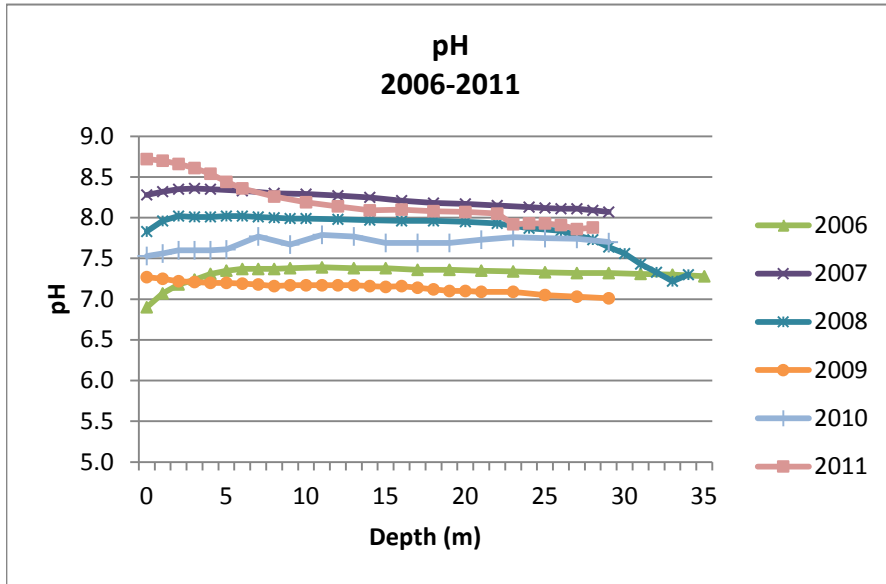


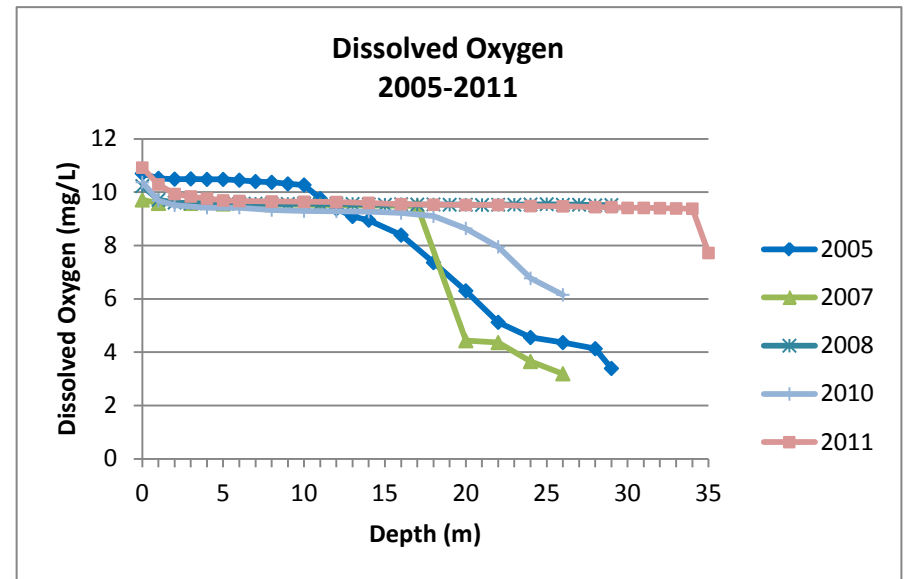
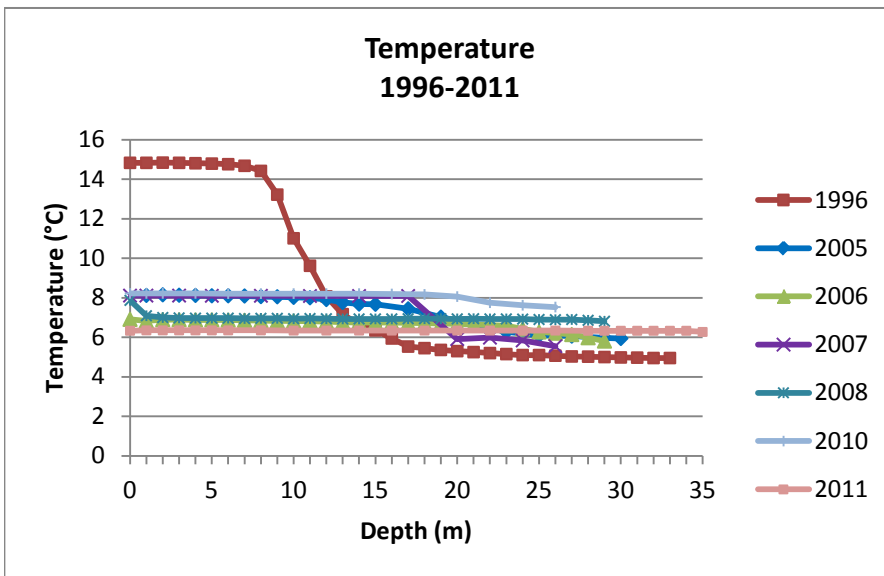
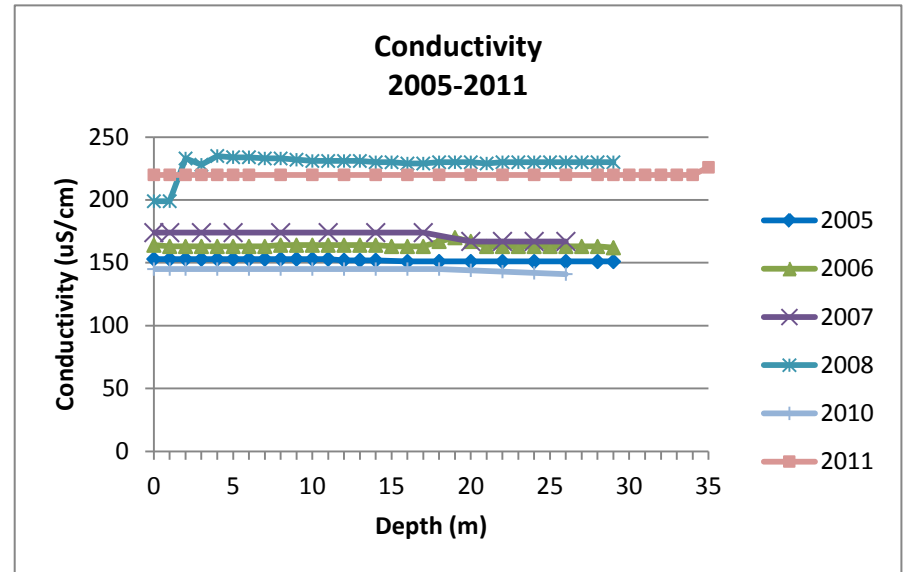
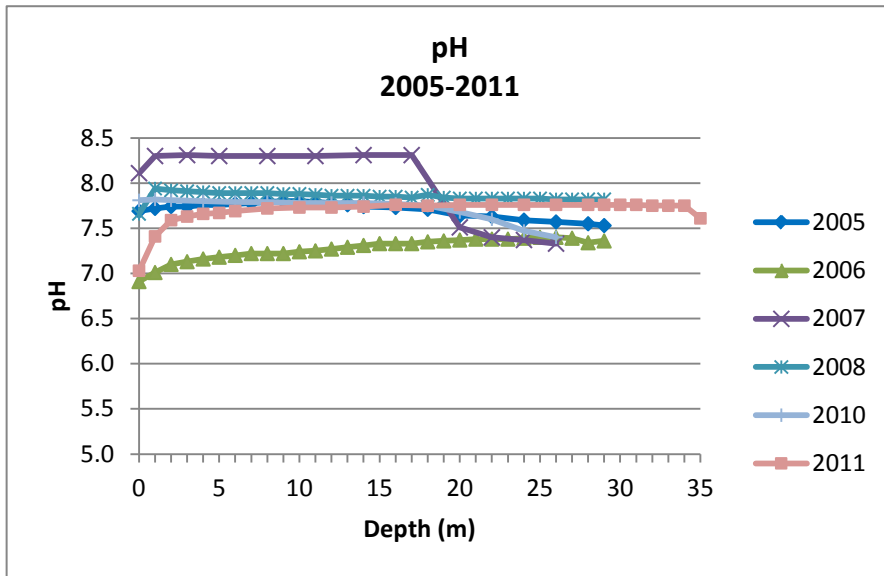
2011 Annual Report
Polley Lake P1 Winter Lake Profiles



2011 Annual Report
Polley Lake P1 Spring Lake Profiles



2011 Annual Report
Polley Lake P1 Fall Lake Profiles



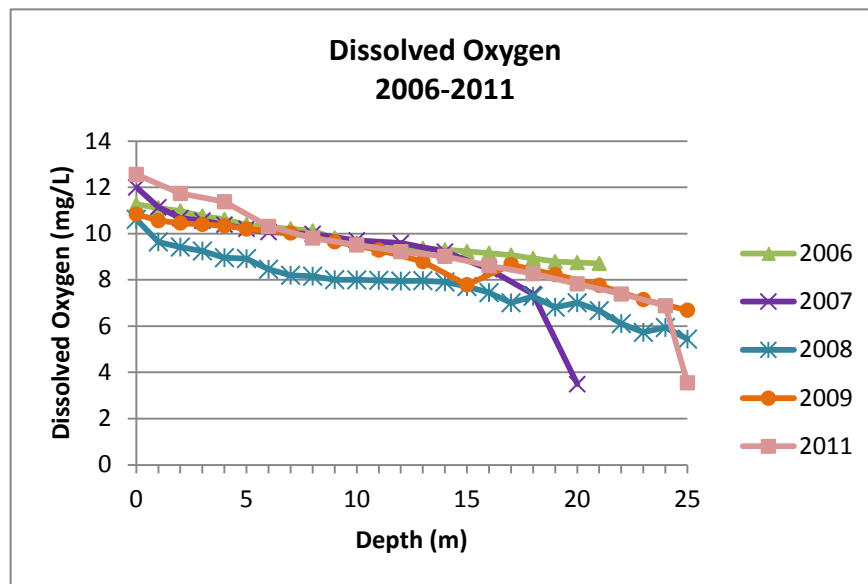
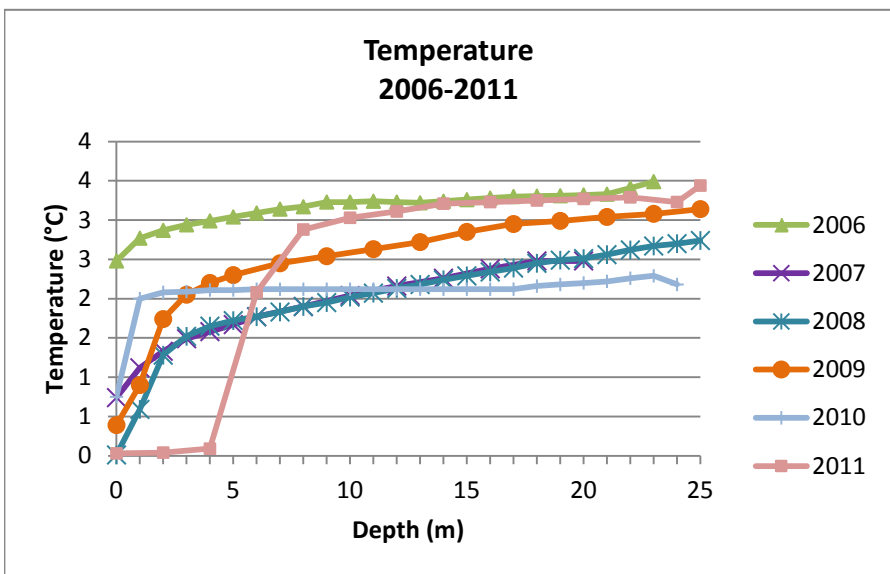
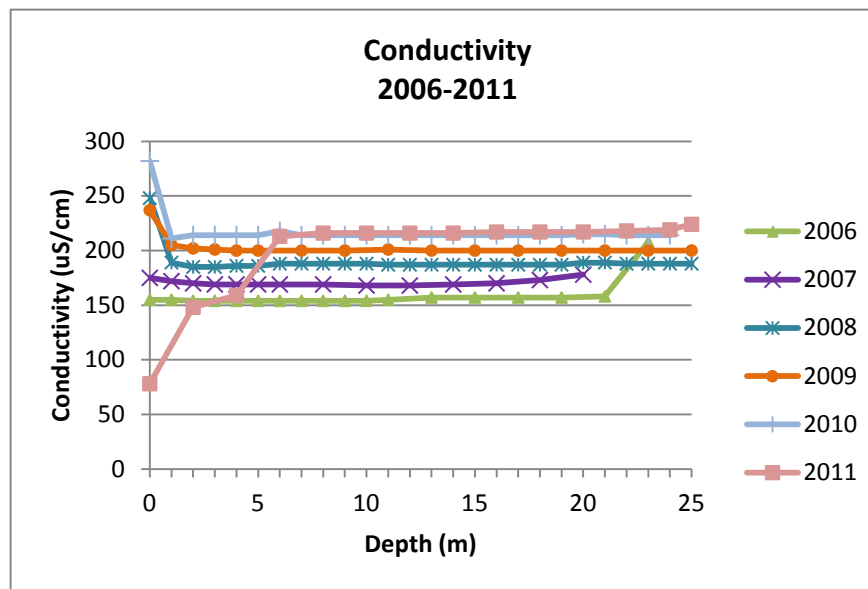
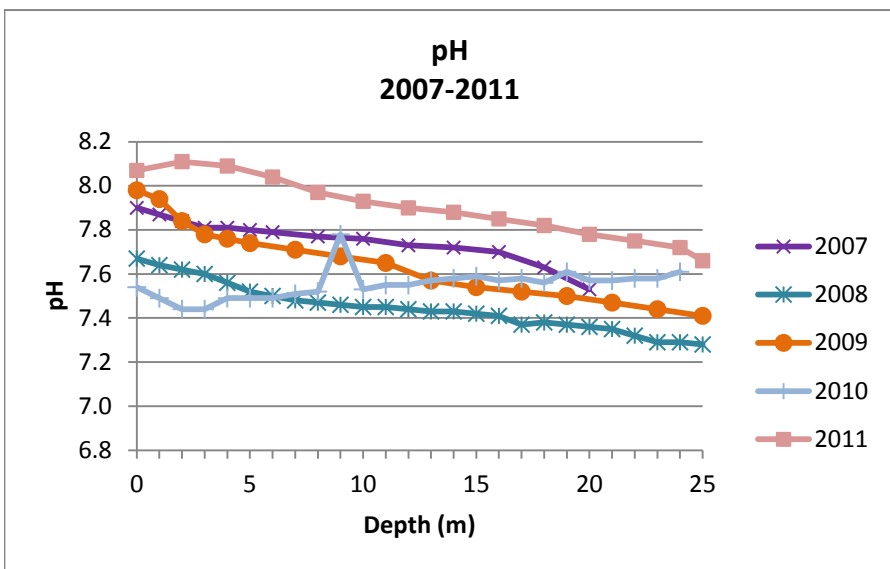
**2011 Annual Report
Polley Lake P2 pH Profiles (2005 - 2011)**

Depth (m)	Spring						Fall						Winter					
	18-May-06	23-May-07	21-May-08	20-May-09	26-Apr-10	6-Jun-11	26-Oct-05	31-Oct-06	23-Oct-07	28-Oct-08	2-Nov-10	1-Nov-11	6-Mar-07	1-Apr-08	13-Mar-09	2-Mar-10	9-Mar-11	
pH																		
0		8.05	7.96	7.35		9.25		7.52	8.22	7.83	7.6	7.4		7.67	7.98	7.54	8.07	
1	7.71	8.21	8.02	7.32		9.04	7.46		8.22	7.81	7.63	7.49	7.9	7.64	7.94	7.49		
2	7.73	8.29	8.03	7.31		8.88	7.48	7.55	8.23	7.79	7.65	7.54	7.87	7.62	7.84	7.44	8.11	
3	7.73		8.04	7.34		8.81	7.49			7.78	7.65	7.56	7.84	7.6	7.78	7.44		
4	7.8	8.33	8.04	7.34		8.77	7.52		8.22	7.77	7.65	7.6	7.81	7.56	7.76	7.49	8.09	
5	7.91			7.34		8.72	7.54	7.65		7.77		7.63	7.81	7.52	7.74	7.49		
6	7.81	8.37	8.05	7.34	7.97	8.68	7.56		8.22	7.76	7.64	7.63	7.8	7.5		7.49	8.04	
7	7.78			7.35	7.97	8.41	7.57	7.65		7.76			7.79	7.48	7.71	7.51		
8	7.75	8.39	8.05	7.33	7.97	8.23	7.58		8.19	7.75	7.63	7.64		7.47		7.52	7.97	
9	7.74			7.34	7.97		7.58			7.74			7.77	7.46	7.68	7.78		
10	7.72	8.41	8.05	7.32	7.97	8.11	7.6	7.68		7.73	7.61	7.65		7.45		7.53	7.93	
11	7.72						7.6		8.19	7.72			7.76	7.45	7.65	7.55		
12	7.71	8.42	8.04	7.32	7.99	8.01	7.6			7.73	7.6	7.66		7.44		7.55	7.9	
13							7.58			7.74	7.58		7.73	7.43	7.57	7.57		
14	7.69	8.43	8.03	7.31	8	8.02			8.11	7.73	7.56	7.67		7.43		7.58	7.88	
15								7.63		7.73			7.72	7.42	7.54	7.59		
16	7.66	8.44	8.03	7.31	7.97	8.02				7.73	7.54	7.67		7.41		7.57	7.85	
17									7.7	7.73			7.7	7.37	7.52	7.58		
18	7.64	8.44	8.04	7.32	7.95	8.02				7.72	7.53	7.67		7.38		7.56	7.82	
19										7.69			7.63	7.37	7.5	7.61		
20	7.63	8.41	8.02	7.32	7.99	8		7.3	7.51	7.65	7.51	7.67		7.36		7.57	7.78	
21										7.61			7.53	7.35	7.47	7.57		
22	7.6		8.01	7.32	7.93	8			7.41	7.55	7.49	7.68		7.32		7.58	7.75	
23						7.91				7.51				7.29	7.44	7.58		
24	7.58		7.99	7.29	7.94	7.9			7.35	7.47	7.48	7.67		7.29		7.61	7.72	
25						7.86				7.44				7.28	7.41		7.66	
26			7.92	7.28	7.95					7.25	7.45	7.68						
27																		
28												7.68						
29				7.25								7.41						

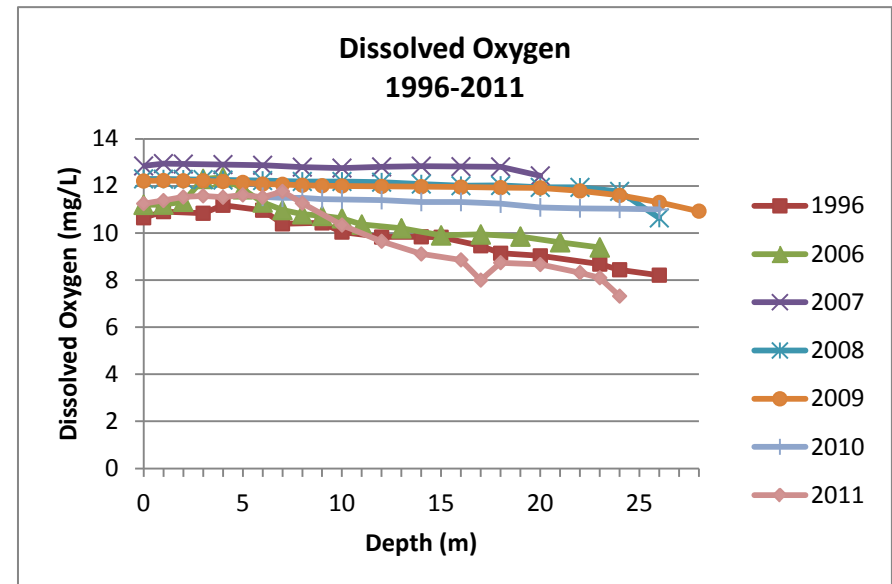
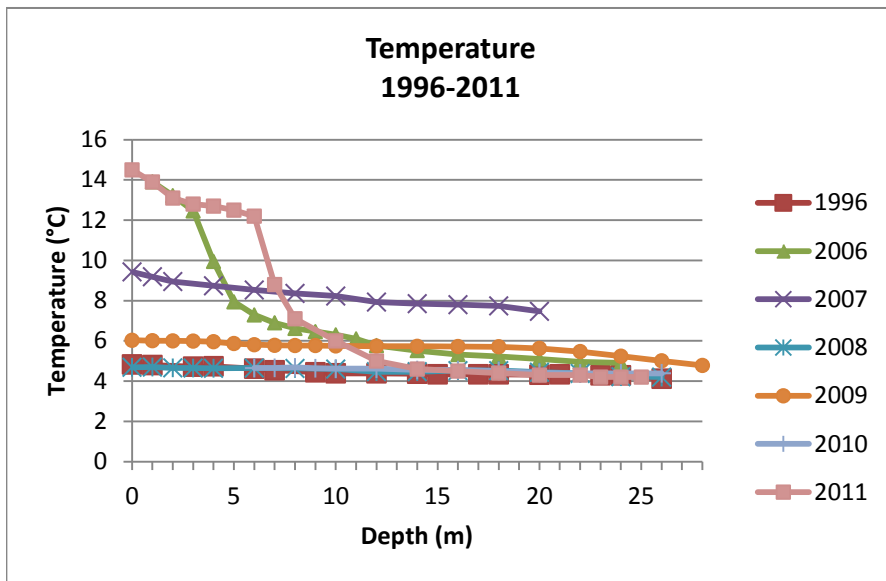
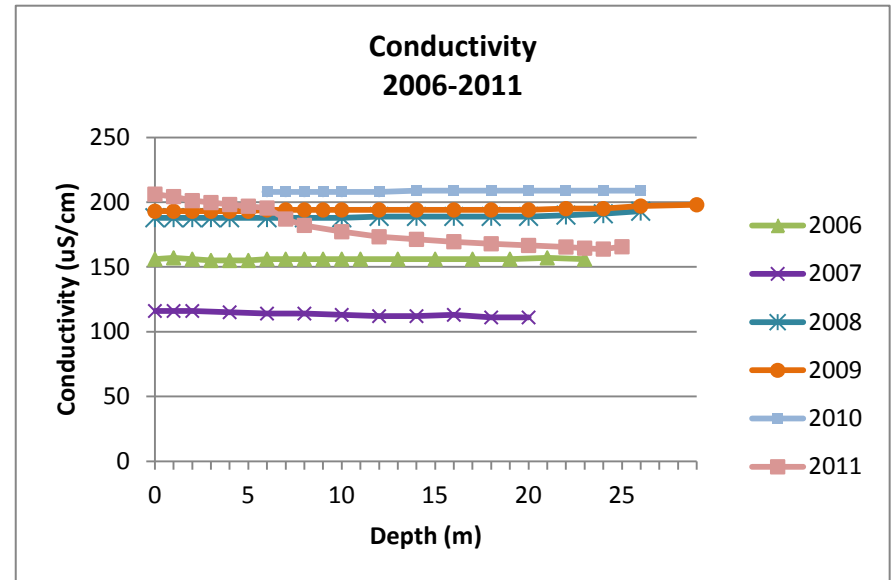
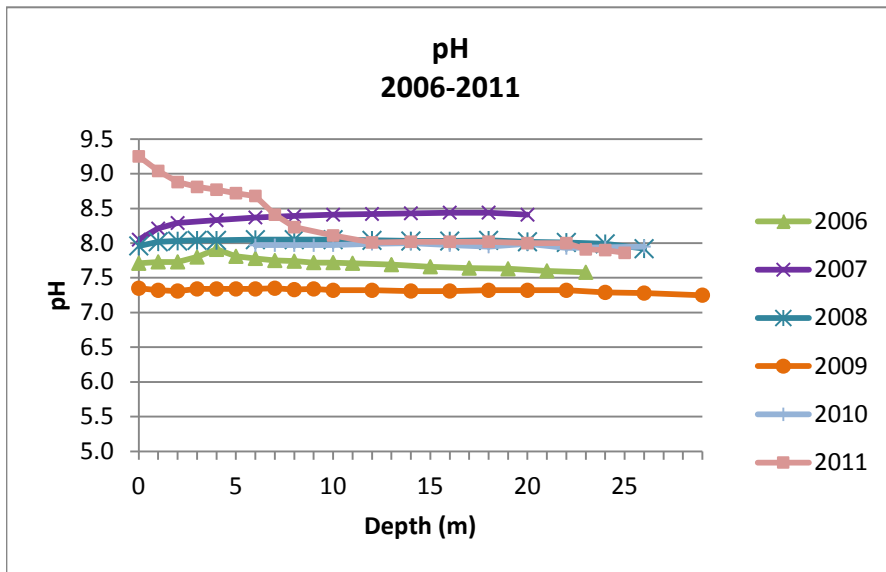
2011 Annual Report
Polley Lake P2 Conductivity (uS/cm) Profiles (2005 - 2011)

Depth (m)	Spring						Fall						Winter						
	18-May-06	23-May-07	21-May-08	20-May-09	26-Apr-10	6-Jun-11	26-Oct-05	31-Oct-06	23-Oct-07	28-Oct-08	2-Nov-10	1-Nov-11	13-Mar-06	6-Mar-07	1-Apr-08	13-Mar-09	2-Mar-10	9-Mar-11	
0		116	188	193		206.2		164	174	197	144	220	155		248	237	282	78	
1	156	116	188	193		204.3	153		175	197	144	219	155	175	189	205	211		
2	157	116	188	193		201.2	153	164	174	197	144	219	154	172	185	202	214	148	
3	156		188	193		199.7	153			197	145	219	154	170	185	201	214		
4	155	115	188	193		198.2	153		174	197	145	219	154	169	186	200	214	159	
5	155			193		196.9	153	164		197		219	154	169	186	200	214		
6	155	114	188	194	208	195.5	153		175	197	145	219	154	169	188		218	213	
7	156			194	208	187	153	164		197			154	169	188	200	214		
8	156	114	188	194	208	182.1	153		174	197	144	219	154		188		214	216	
9	156			194	208		153			197			154	169	188	200	214		
10	156	113	188	194	208	177.2	153	164		197	144	219	154		188		214	216	
11	156						153		174	197			155	168	187	201	214		
12	156	112	189	194	208	173.3	153			197	144	219			187		214	216	
13							153			197	144		157	168	187	200	214		
14	156	112	189	194	209	171.3			174	197	144	219			187		214	216	
15									161	197			157	169	187	200	214		
16	156	113	189	194	209	169.5				197	143	219			187		214	217	
17									168	197			157	170	187	200	214		
18	156	111	189	194	209	167.9				197	144	219			187		214	217	
19										196			157	173	187	200	214		
20	156	111	189	194	209	166.6			161	167	196	143	219			189		215	217
21										195			158	178	189	200	215		
22	157		190	195	209	165.4			167	195	143	219			188		214	218	
23						164.5				195			208		188	200	214		
24	156		191	195	209	163.8			167	195	143	219			188		214	219	
25						165.6				195					188	200		224	
26			193	197	209					196	142	219							
27																			
28												219							
29				198								234							

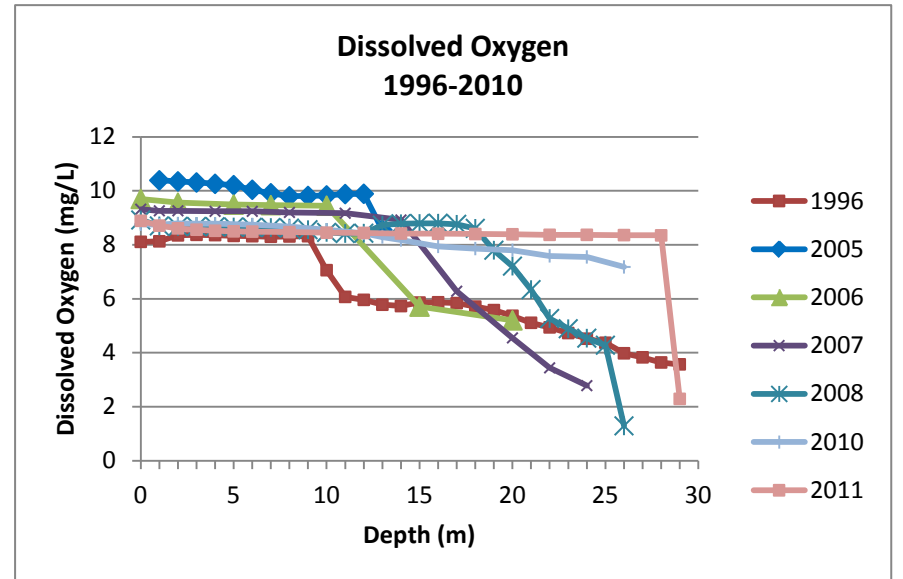
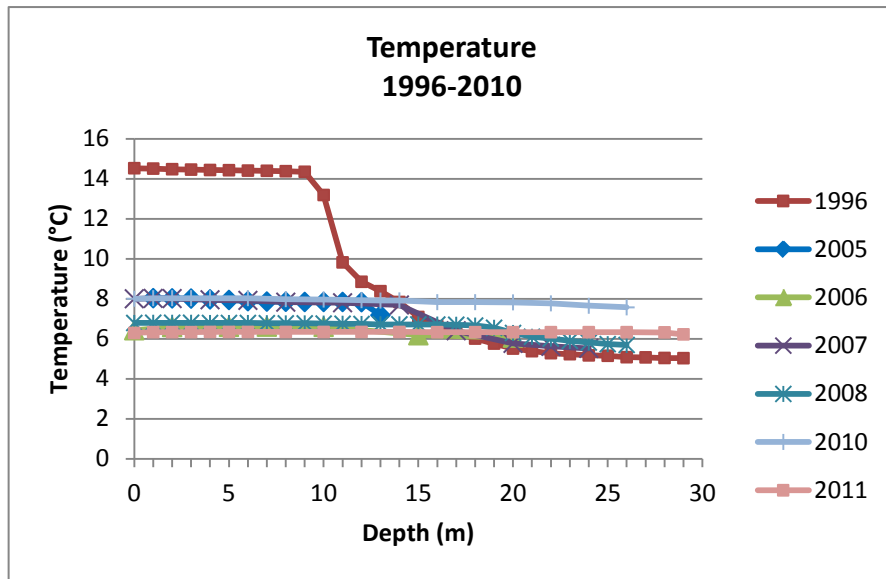
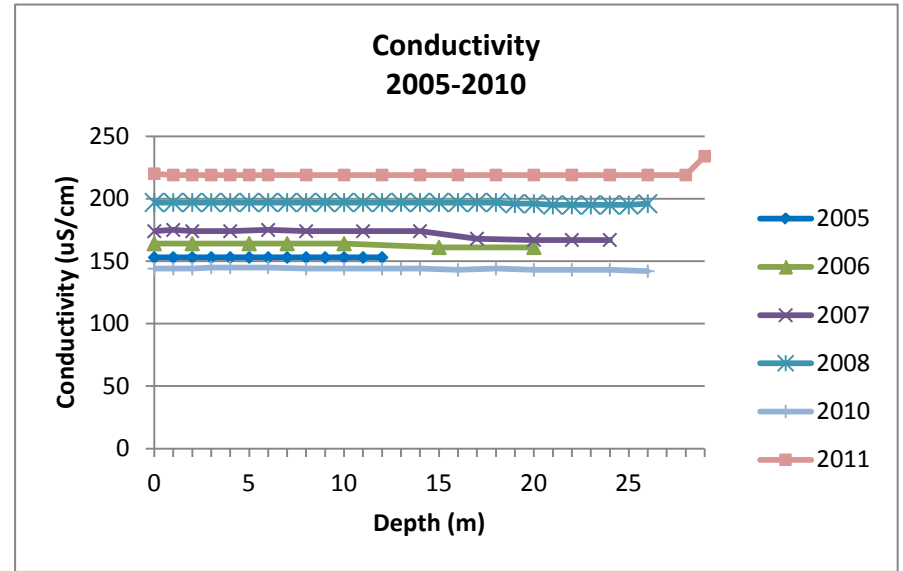
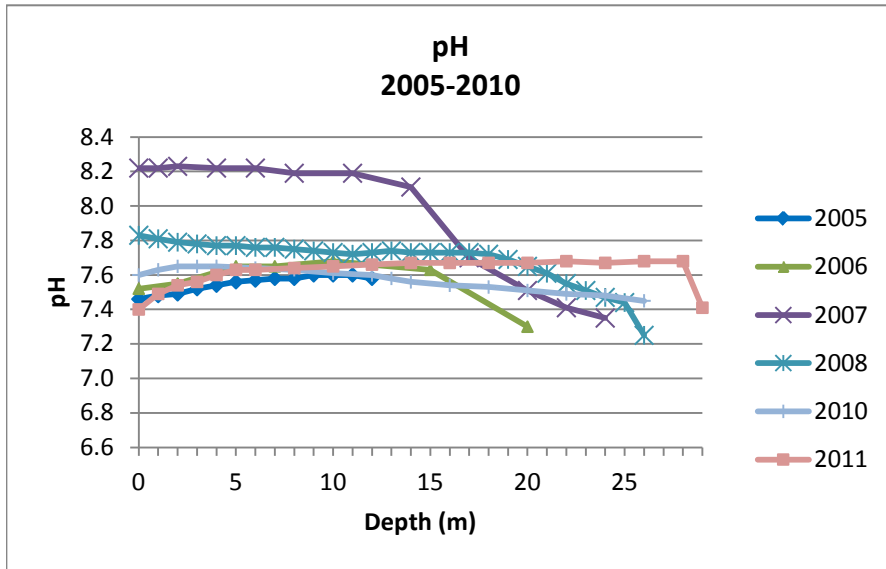
2011 Annual Report
Polley Lake P2 Winter Lake Profiles



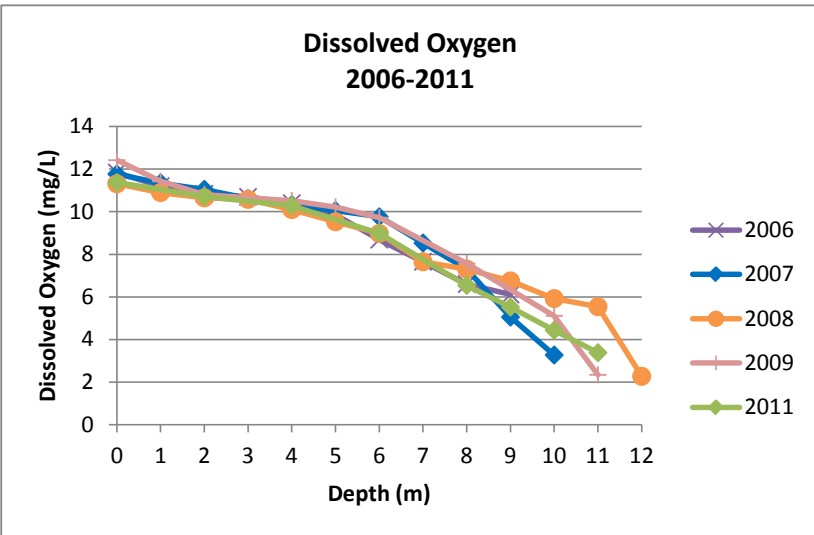
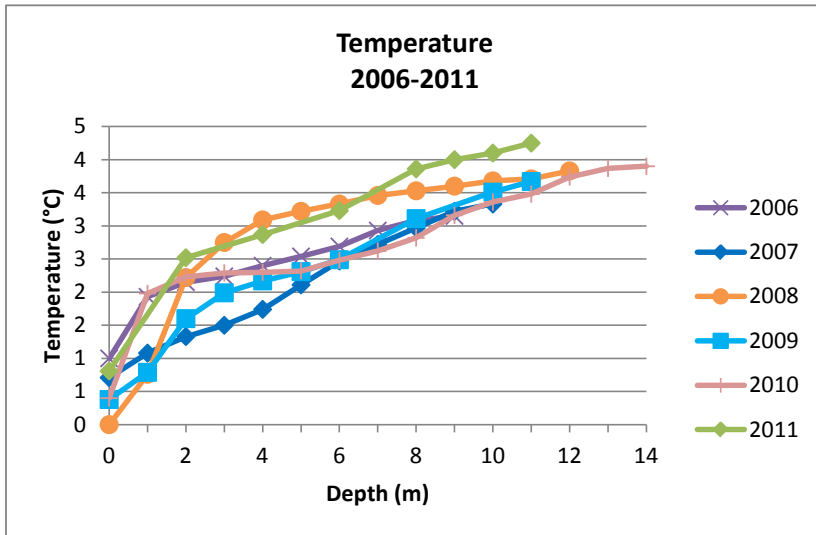
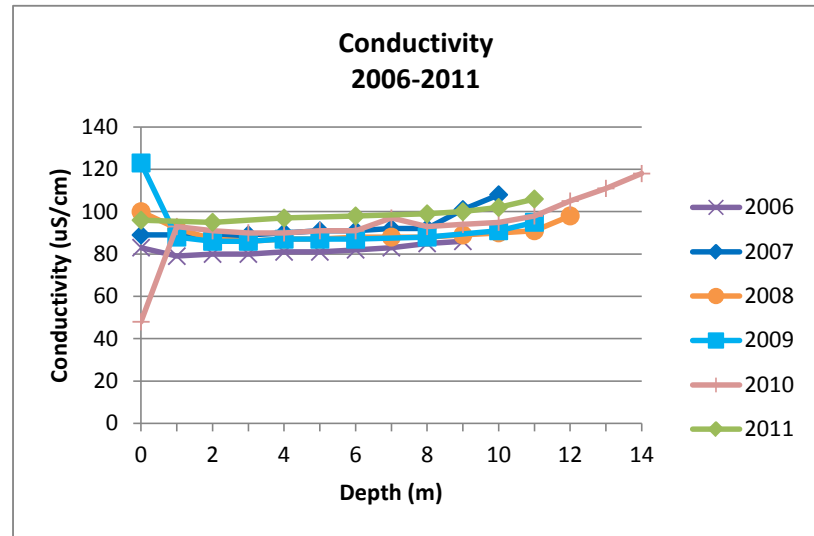
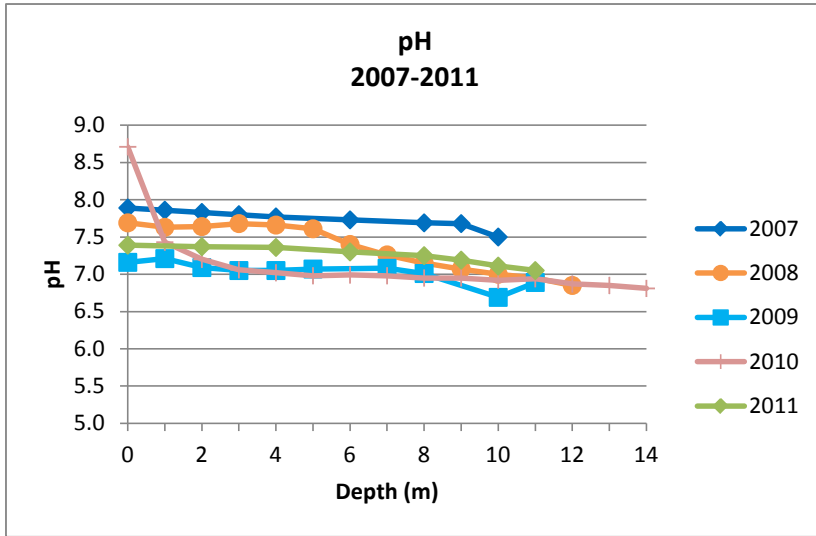
2011 Annual Report
Polley Lake P2 Spring Lake Profiles



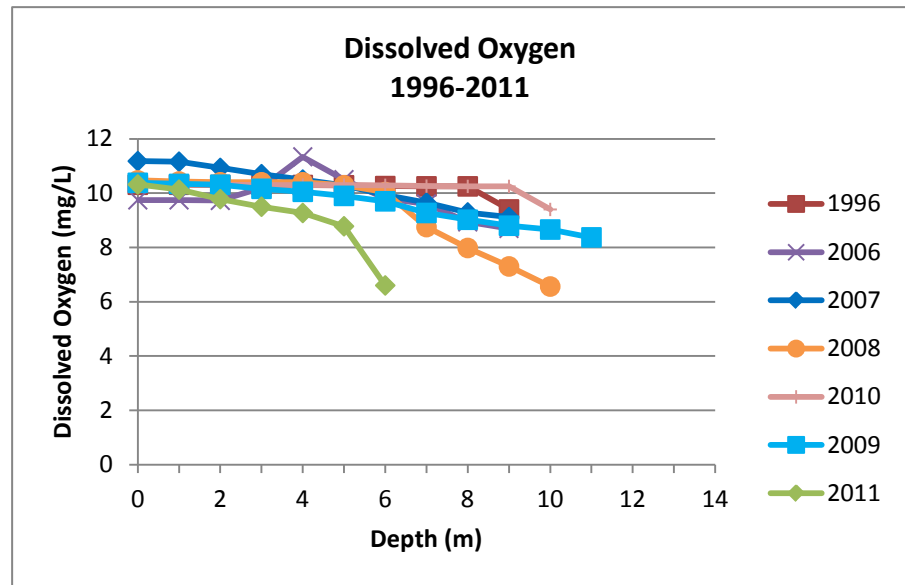
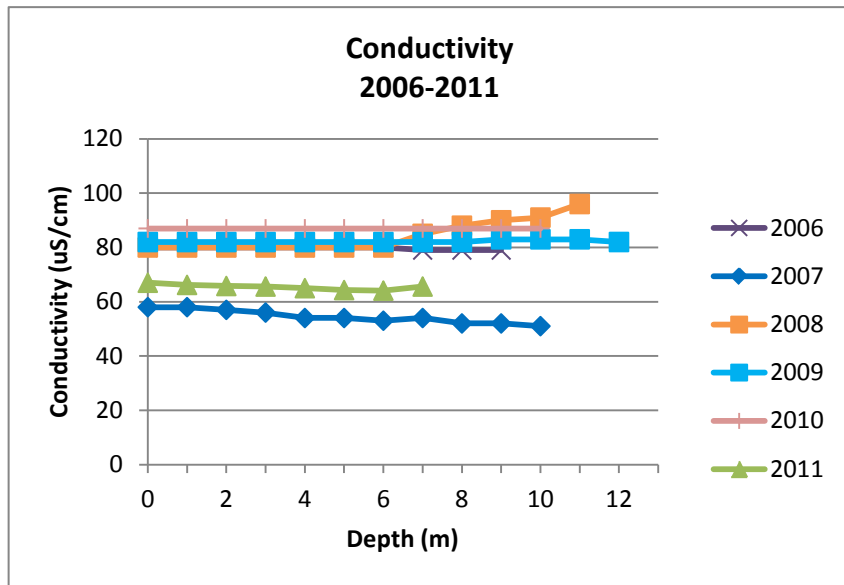
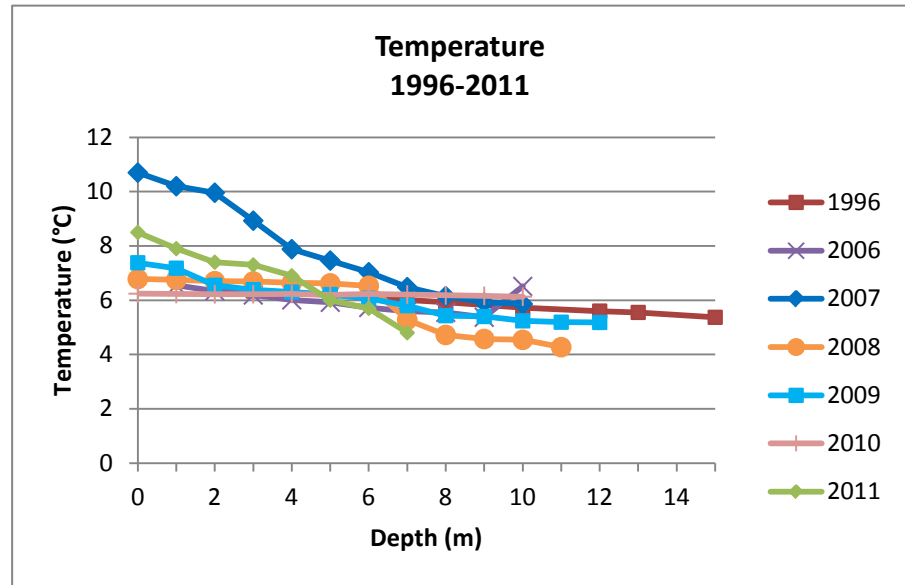
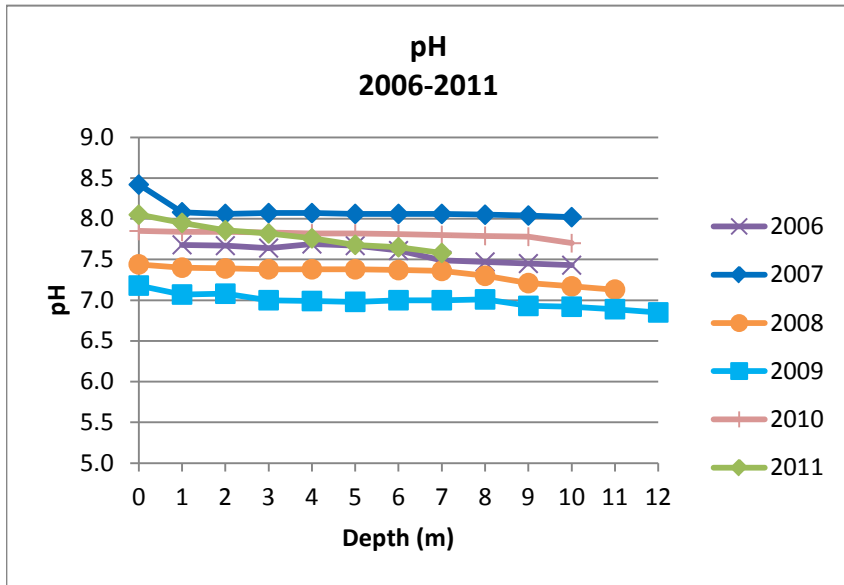
**2011 Annual Report
Polley Lake P2 Fall Lake Profiles**



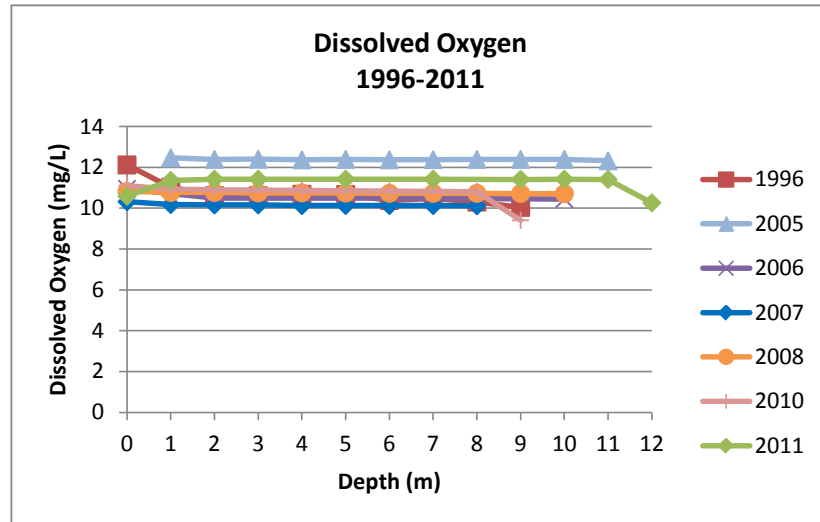
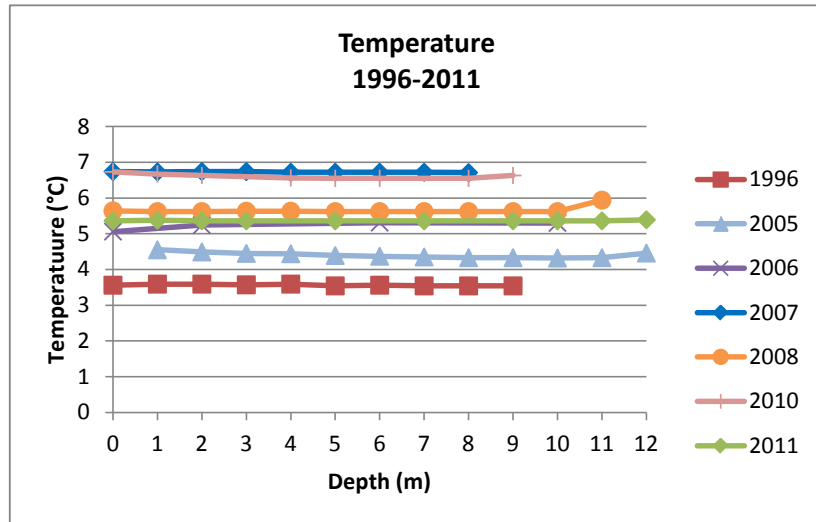
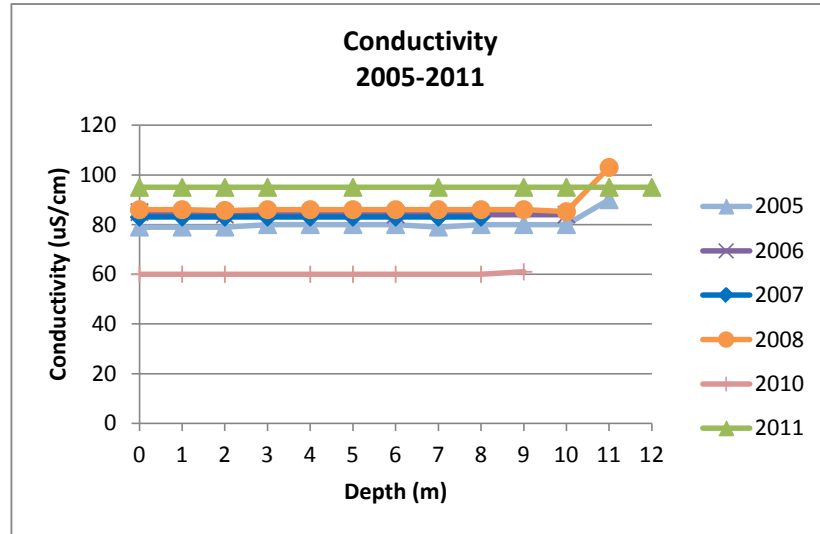
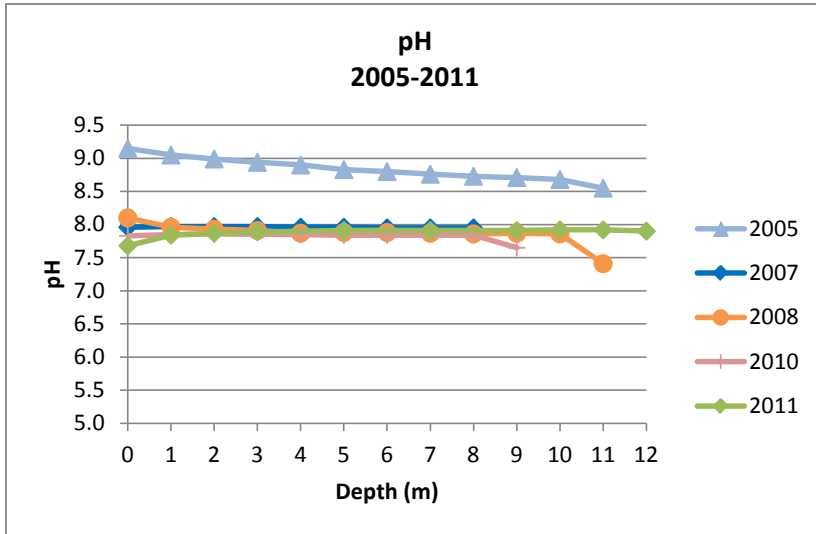
2011 Annual Report
Bootjack Lake B1 Winter Lake Profiles



**2011 Annual Report
Bootjack Lake B1 Spring Profiles**



**2011 Annual Report
Bootjack Lake B1 Fall Profiles**



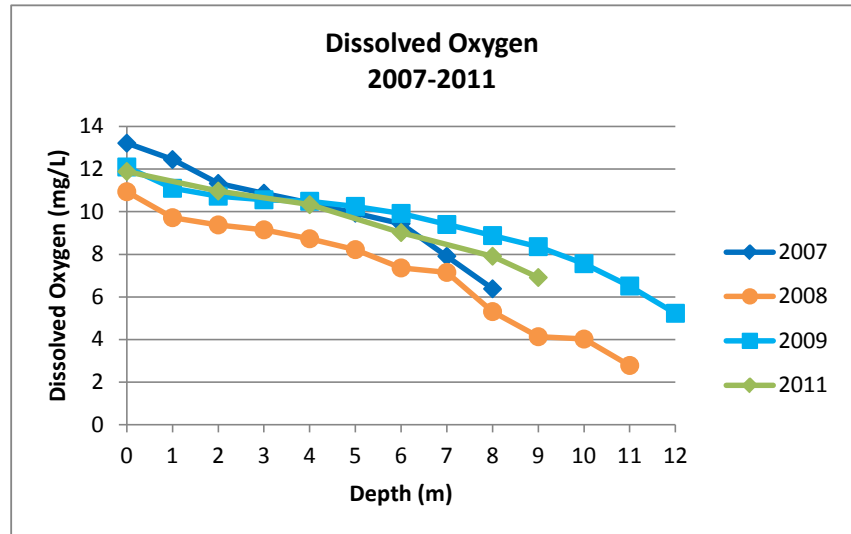
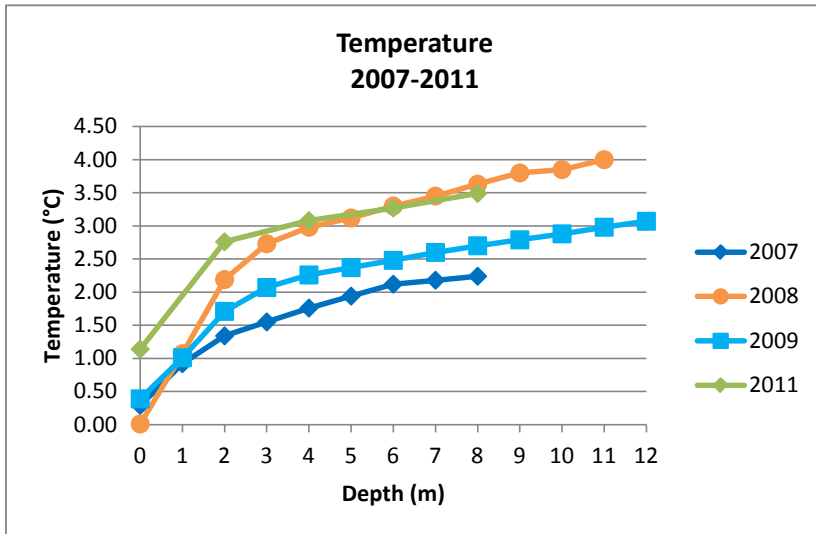
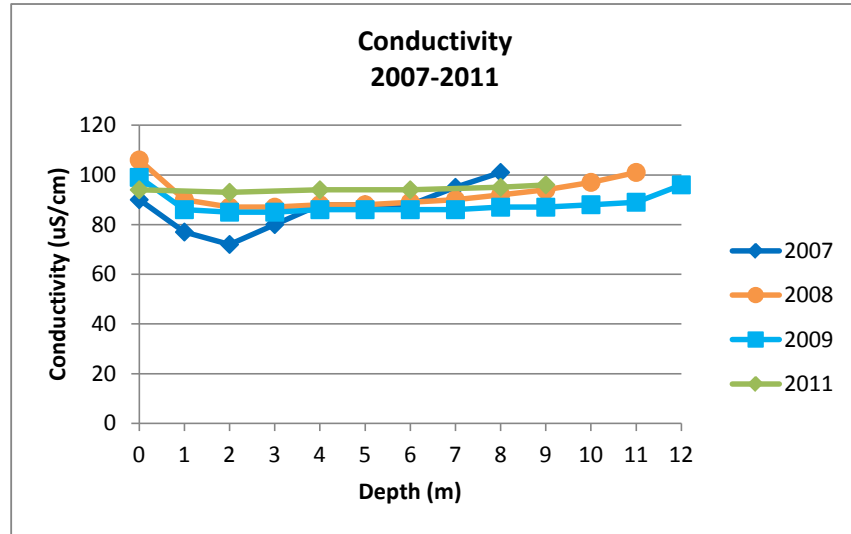
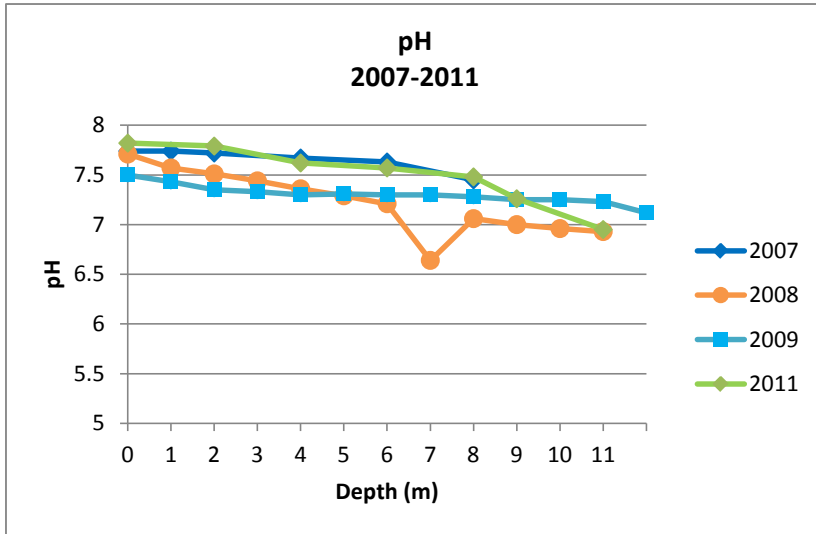
2011 Annual Report
Bootjack Lake B2 pH profiles (2005-2011)

Depth (m)	Spring						Fall						Winter			
	23-May-06	23-May-07	21-May-08	21-May-09	26-Apr-10	25-May-11	10-Nov-05	31-Oct-06	23-Oct-07	27-Oct-08	2-Nov-10	1-Nov-11	6-Mar-07	1-Apr-08	12-Mar-09	8-Mar-11
0		7.77	7.31	7.05	8.13	8.58			8.63	7.84	7.94	7.63		7.71	7.43	7.82
1		7.78	7.32	7.02	8.1	8	8.3		8.03	7.82	7.88	7.74	7.74	7.57	7.35	
2		7.78	7.32	7.03	8.07	7.97	8.28		7.9	7.82	7.86	7.76	7.74	7.51	7.33	7.79
3		7.78	7.32	7.04	8.06	7.88	8.27		7.89	7.81		7.77	7.72	7.44	7.3	
4		7.78	7.35	7.05	8.02	7.85	8.26		7.86	7.8	7.83	7.77		7.36	7.31	7.62
5		7.78	7.36	7.06	8.01	7.81	8.22		7.85	7.8		7.78	7.67	7.29	7.3	
6		7.78	7.36	7.04	8	7.75	8.24		7.83	7.8	7.79			7.21	7.3	7.57
7		7.78	7.37	7.05	7.99	7.68	8.23		7.83	7.8		7.78	7.63	6.64	7.28	
8		7.78	7.37	7.03	7.99	7.66	8.19		7.82	7.79	7.78			7.06	7.25	7.48
9		7.78	7.3	7	7.97		8.2		7.82	7.79		7.78	7.45	7	7.25	7.26
10			7.37	6.96	7.95				7.82	7.78	7.78			6.96	7.23	
11			7.37	6.96	7.95				7.81			7.79		6.93	7.12	6.95
12			7.35		7.93				7.83			7.8				
13					7.96				7.83							
14									7.81							

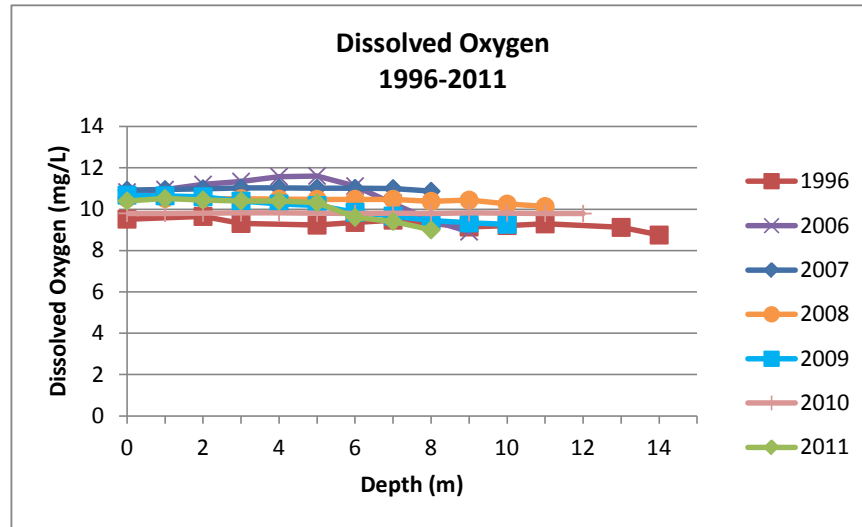
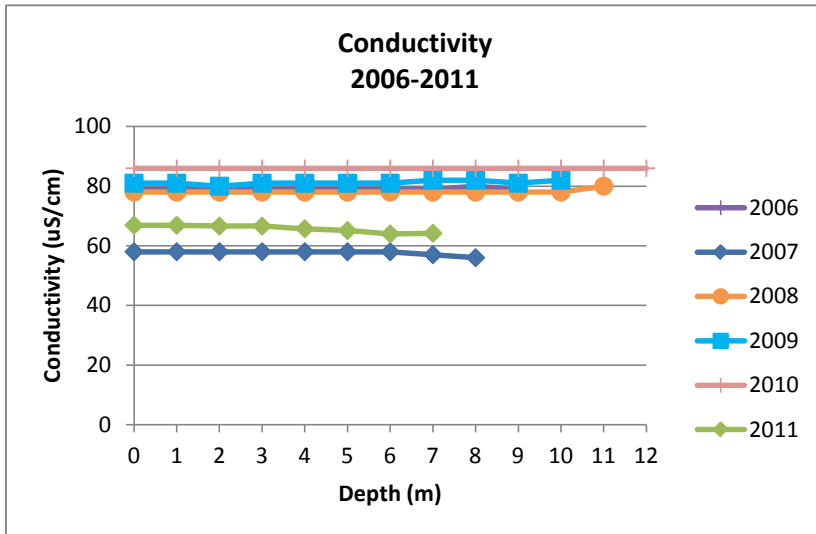
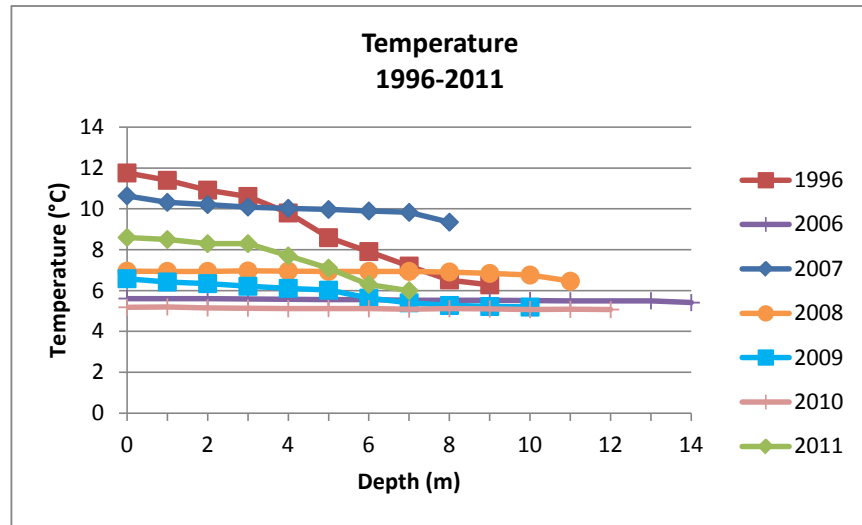
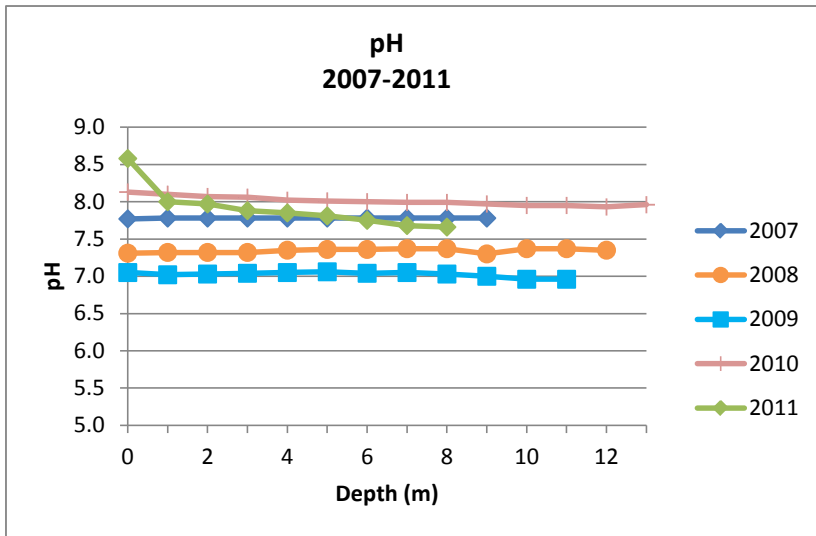
Bootjack Lake B2 Conductivity (uS/cm) Profiles (2005 - 2011)

Depth (m)	Spring						Fall						Winter			
	23-May-06	23-May-07	21-May-08	21-May-09	26-Apr-10	25-May-11	10-Nov-05	31-Oct-06	23-Oct-07	27-Oct-08	2-Nov-10	1-Nov-11	6-Mar-07	1-Apr-08	12-Mar-09	8-Mar-11
0		58	78	82	86	68.6		84	79	131	61	95		106	99	94
1	79	58	78	81	86	66.9	80		82	135	61	95	90	90	86	
2	79	58	78	81	86	66.9	80	85	80	136	61	95	77	87	85	93
3	79	58	78	80	86	66.6	80		82	137		95	72	87	85	
4	79	58	78	81	86	66.6	80	85	82	137	60	95	80	88	86	94
5	79	58	78	81	86	65.7	80		82	137		95	88	88	86	
6	79	58	78	81	86	65.1	80		82	137	60		88	89	86	94
7	79	58	78	81	86	64	80	88	80	138		95	88	90	86	
8	79	57	78	82	86	64.2	80		82	138	60		95	92	87	95
9	80	56	78	82	86		80		80	138		95	101	94	87	96
10	79		78	81	86				82	138	61			97	88	
11			78	82	86				82			95		101	89	
12			80		86				82			95			96	
13					86				82							
14									82							

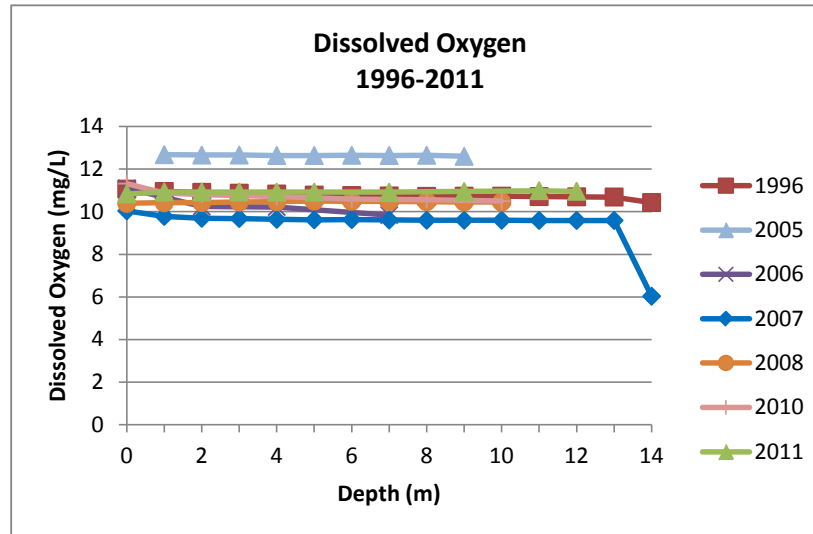
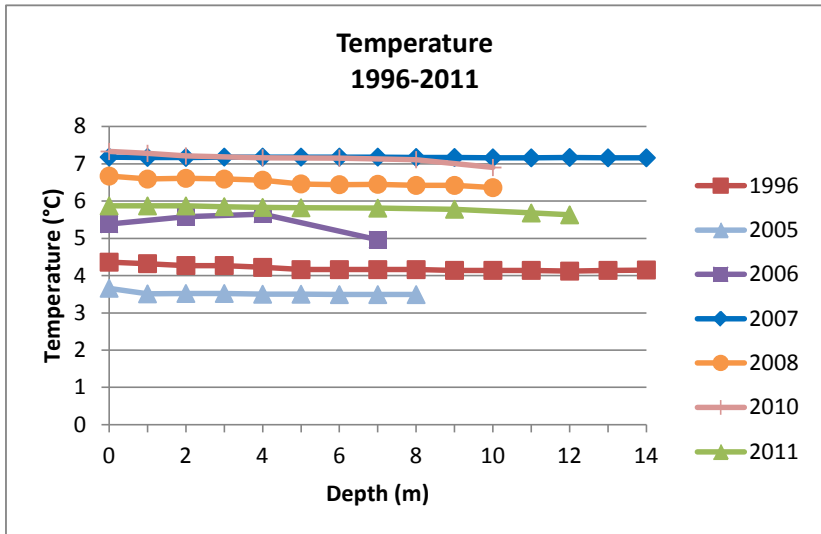
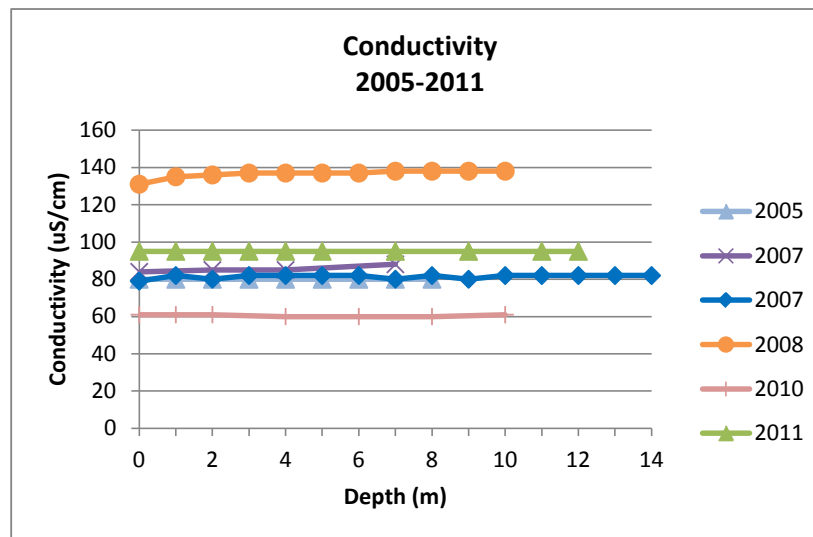
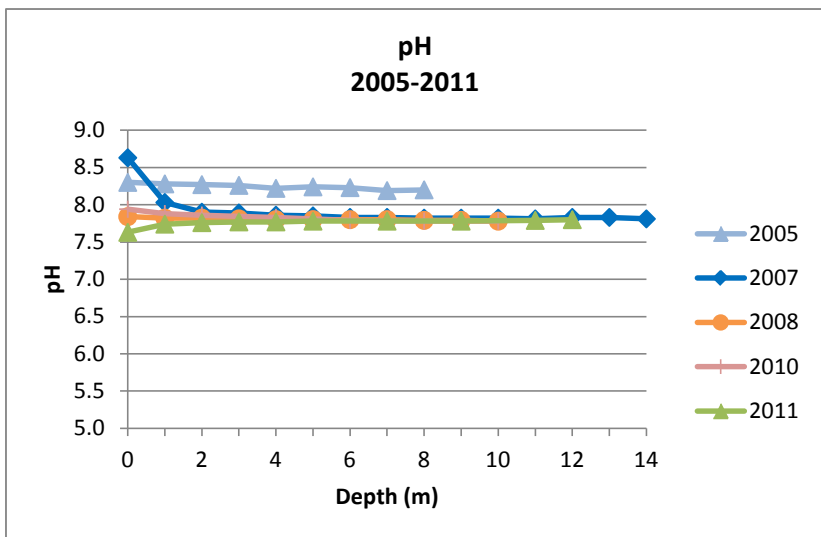
2011 Annual Report
Bootjack Lake B2 Winter Lake Profiles



2011 Annual Report
Bootjack Lake B2 Spring Profiles



2011 Annual Report
Bootjack Lake B2 Fall Lake Profiles



2011 Annual Report
Secchi Disk Depths (m) for Polley Lake and Bootjack Lake (2005-2011)

Polley Lake			Bootjack Lake		
Date	P1	P2	Date	B1	B2
2005					
2-May-05	4.6	3.9	2-May-05	4.06	3.58
15-Jun-05	5.23	5.1	15-Jun-05	4.6	4.88
29-Jun-05	5.73	5.83	29-Jun-05	5.6	4.8
11-Jul-05	5.1	4.7	11-Jul-05	5.35	5.05
21-Jul-05	6.8	6.5	20-Jul-05	4.6	5.1
8-Aug-05	5.8	6.1	19-Aug-05	6.1	4.9
24-Aug-05	4.6	3.9	10-Nov-05	3.2	3.4
30-Aug-05	4.2	3.9			
26-Oct-05	5.8	5.85			
AVERAGE	5.3	5.1	AVERAGE	4.8	4.5
2006					
18-May-06	3.95	4.5	23-May-06	5.58	4.33
13-Jun-06	7.5	6.5	13-Jun-06	6.28	6.17
4-Jul-06	7.71	7.24	4-Jul-06	6.93	7.17
19-Jul-06	6.45	5.25	20-Jul-06	7.08	6.89
2-Aug-06	6	5.63	2-Aug-06	5.82	5.63
11-Aug-06	5.76	5.85	22-Aug-06	5.8	5.57
AVERAGE	6.2	5.8	AVERAGE	6.2	6.0
2007					
23-May-07	3.15	3.27	23-May-07	3.67	4.06
20-Jun-07	5.71	5.48	20-Jun-07	5.63	5.26
5-Jul-07	6.79	6.69	5-Jul-07	6.94	7.1
17-Jul-07	4.71	6.42	17-Jul-07	5.95	6.41
31-Jul-07	5.88	6.14	31-Jul-07	5.45	5.88
15-Aug-07	6.54	7.09	15-Aug-07	6.5	7.57
7-Sep-07	4.92	5.16	24-Sep-07	5.12	5.32
16-Oct-07	4.34	4.35	16-Oct-07	4.02	4.51
23-Oct-07	4.32	4.52	23-Oct-07	3.5	3.58
AVERAGE	5.2	5.5	AVERAGE	5.2	5.5
2008					
21-May-08	4.4	3.75	21-May-08	3.4	3.37
10-Jun-08	3.75	3.35	10-Jun-08	3.25	3
2-Jul-08	5.8	4.2	2-Jul-08	6.5	6.25
17-Jul-08	4.8	5.6	17-Jul-08	5	5.4
31-Jul-08	4.8	4.6	31-Jul-08	5.2	4.6
14-Aug-08	5.6	5.8	14-Aug-08	6.9	5.3
2-Sep-08	5.05	5.45	2-Sep-08	5.55	5.05
11-Sep-08	5.8	6.45	11-Sep-08	4.3	4.5
29-Sep-08	4.9	5.1	29-Sep-08	5.9	6.2
8-Oct-08	4.7	4.8	8-Oct-08	3.9	3.6
AVERAGE	5.0	4.9	AVERAGE	5.0	4.7

2011 Annual Report
Secchi Disk Depths (m) for Polley Lake and Bootjack Lake (2005-2011)

Polley Lake			Bootjack Lake		
Date	P1	P2	Date	B1	B2
2009					
16-Jun-09	6.03	4.49	16-Jun-09	6.42	6.77
15-Jul-09	6.62	5.53	15-Jul-09	5.88	5.73
12-Aug-09	6.2	6.32	12-Aug-09	6.15	5.77
26-Aug-09	7.76	7.03	26-Aug-09	6.15	7.14
1-Oct-09	7.17	7.07	1-Oct-09	4.32	4.68
18-Oct-09	5.2	5.25	18-Oct-09	3.3	3.65
AVERAGE	6.5	5.9	AVERAGE	5.4	5.6
2010					
26-Apr-10	3.1	3	26-Apr-10	3.3	3.3
13-May-10	5.5	5.7	13-May-10	4.2	4.95
8-Jun-10	7.5	7.33	8-Jun-10	6.51	6
24-Jun-10	6.64	8.4	24-Jun-10	5.82	6.55
13-Jul-10	6.28	5.95	13-Jul-10	3.68	3.67
26-Jul-10	6.27	6.61	26-Jul-10	5.38	6.5
12-Aug-10	5.45	5.4	12-Aug	4.94	5.05
24-Aug-10	5.35	6.35	24-Aug	5.28	5.19
16-Sep-10	7.42	8.24	16-Sep-10	5.6	7.13
7-Oct-10	5.02	5.69	7-Oct-10	4.99	3.59
2-Nov-10	5.86	5.3	2-Nov-10	3.42	2.83
AVERAGE	5.9	6.2	AVERAGE	4.8	5.0
2011					
25-May-11	2.58	3.13	25-May-11	3.47	2.74
6-Jun-11	4.18	4.2	6-Jun-11	4.35	4.6
21-Jun-11	2.15	2.81	20-Jun-11	4.79	4.5
6-Jul-11	4.16	4.48	6-Jul-11	4.6	4.5
19-Jul-11	4.52	3.7	19-Jul-11	4.6	4.1
8-Aug-11	4.85	5.09	8-Aug-11	4.25	4
24-Aug-11	4.9	3.95	24-Aug-11	5.2	5.3
7-Sep-11	4.52	4.36	7-Sep-11	6.34	5.95
20-Sep-11	4.08	3.95	20-Sep-11	4.95	5.45
4-Oct-11	3.50	4.75	6-Oct-11	4.62	4.8
AVERAGE	3.9	4.0	AVERAGE	4.7	4.6

2011 Annual Report
Secchi Disk Reading Depths at Polley and Bootjack Lakes

