

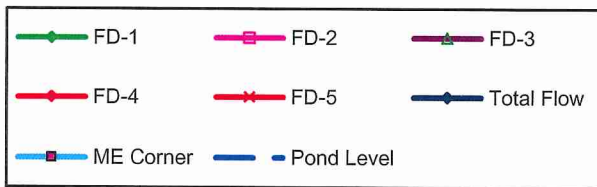
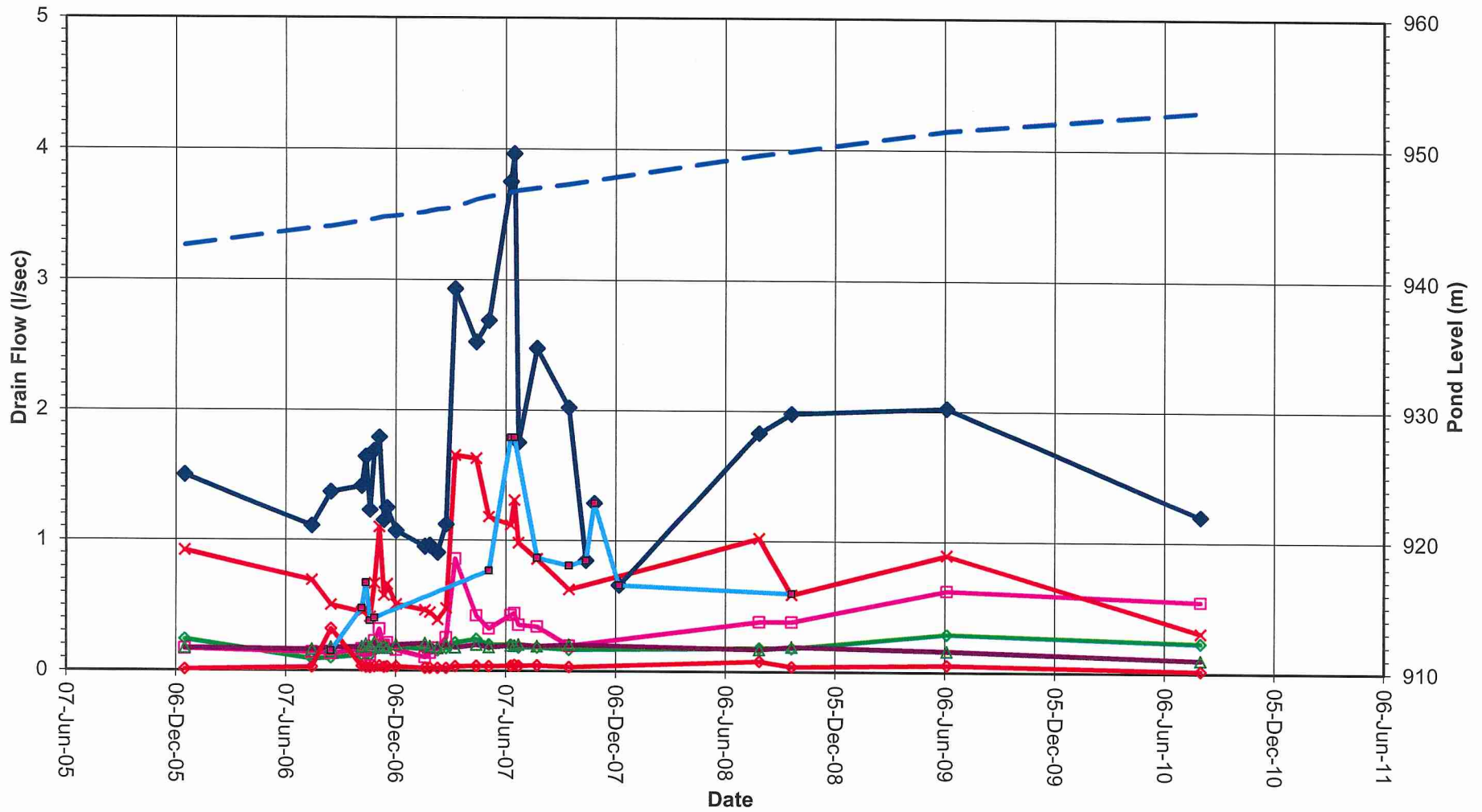
TABLE 1

MOUNT POLLEY MINING CORPORATION
MOUNT POLLEY PROJECT
TAILINGS STORAGE FACILITY

MAIN EMBANKMENT SEEPAGE COLLECTION POND - SUMMARY OF DRAIN FLOW DATA

Note: The elevation for the top of the casing for Ground Water Well GW96-9 is approximately 916.78 m. The ground elevation is 916.18 m.

SAMPLING DATE	FD-1			FD-2			FD-3			FD-4			FD-5			ME Corner			TOTAL FLOW		Pond El (m)	GW96-9 (GW Well) Elev. Above Top of Casing			
	Flow Rate l/min	Flow Rate l/sec	Flow Rate	Flow Rate l/min	Flow Rate l/sec	Flow Rate	Flow Rate l/min	Flow Rate l/sec	Flow Rate	Flow Rate l/min	Flow Rate l/sec	Flow Rate	Flow Rate l/min	Flow Rate l/sec	Flow Rate	Flow Rate l/min	Flow Rate l/sec	Flow Rate	Flow Rate						
28-Aug-96	4.62	0.08	Clear	0.49	0.01	Clear	5.37	0.09	Clear	1.77	0.03	Tr. cloudy	-	-	-	-	-	-	-	-	12.25	0.20	FD-3, FD-4 Incomplete		
01-Sep-96	3.55	0.06	Clear	0.82	0.01	Clear	6.55	0.11	Cloudy	1.25	0.02	V. Cloudy	-	-	-	-	-	-	-	-	12.18	0.20	FD-3, FD-4 Incomplete		
05-Sep-96	2.60	0.04	Clear	0.62	0.01	Clear	2.71	0.05	Clear	0.93	0.02	Cloudy	-	-	-	-	-	-	-	-	6.86	0.11	FD-3, FD-4 Incomplete		
10-Sep-96	2.04	0.03	Clear	0.66	0.01	Clear	2.17	0.04	Clear	0.81	0.01	Clear	-	-	-	-	-	-	-	-	5.68	0.09	FD-3, FD-4 Incomplete		
27-Sep-96	3.10	0.05	Clear	0.70	0.01	Clear	3.10	0.05	Clear	1.00	0.02	Clear	-	-	-	-	-	-	-	-	7.90	0.13	FD-3, FD-4 Incomplete		
05-Oct-96	4.94	0.08	Clear	0.77	0.01	Clear	4.33	0.07	Tr. cloudy	6.16	0.10	Tr. cloudy	-	-	-	-	-	-	-	-	16.20	0.27	FD-3, FD-4 Incomplete		
12-Oct-96	3.90	0.07	Clear	1.00	0.02	Clear	3.50	0.06	Clear	1.80	0.03	Clear	-	-	-	-	-	-	-	-	10.20	0.17	FD-3, FD-4 Incomplete		
13-Oct-96	4.20	0.07	Clear	0.90	0.02	Clear	13.50	0.23	Clear	1.70	0.03	Clear	-	-	-	-	-	-	-	-	20.30	0.34	FD-3 complete, FD-4 Incomplete	915.20	
14-Oct-96	3.80	0.06	Clear	1.00	0.02	Clear	15.00	0.25	Clear	5.40	0.09	Clear	-	-	-	-	-	-	-	-	25.20	0.42	FD-3 complete, FD-4 Incomplete	915.50	
17-Oct-96	5.90	0.10	Clear	0.80	0.01	Clear	16.60	0.28	Clear	26.10	0.44	Clear	-	-	-	-	-	-	-	-	28.70	0.48	FD-3 complete, FD-4 complete	915.23	
18-Oct-96	9.80	0.16	Clear	1.00	0.02	Clear	20.40	0.34	Clear	5.90	0.10	Clear	-	-	-	-	-	-	-	-	45.90	0.77		915.50	
22-Oct-96	6.20	0.10	Clear	1.50	0.03	Clear	24.20	0.40	Clear	6.40	0.11	Clear	-	-	-	-	-	-	-	-	33.30	0.66		915.63	
27-Oct-96	6.00	0.10	Clear	1.35	0.02	Clear	8.91	0.15	Clear	3.19	0.05	Clear	-	-	-	-	-	-	-	-	38.10	0.64		916.00	
15-Mar-97	3.89	0.06	Clear	1.15	0.02	Clear	8.37	0.14	Clear	2.87	0.05	Clear	-	-	-	-	-	-	-	-	17.34	0.29	plg installed, sump pumped out	918.00	
16-Mar-97	3.48	0.06	Clear	1.12	0.02	Clear	8.40	0.14	Clear	3.46	0.06	Clear	-	-	-	-	-	-	-	-	15.88	0.26	plg installed, sump pumped out	918.20	
02-Apr-97	2.10	0.04	Clear	0.94	0.02	Clear	11.56	0.19	Clear	2.35	0.04	Clear	-	-	-	-	-	-	-	-	15.08	0.25	plg installed, sump pumped out	920.27	
23-Apr-97	4.14	0.07	Clear	0.84	0.01	Clear	12.73	0.21	Clear	2.05	0.03	Clear	-	-	-	-	-	-	-	-	18.99	0.32	plg installed, sump pumped out	923.70	
24-Apr-97	3.16	0.05	Clear	0.76	0.01	Clear	10.32	0.17	Clear	1.71	0.03	Clear	-	-	-	-	-	-	-	-	18.78	0.31	plg installed, sump pumped out	923.75	
29-Apr-97	2.90	0.05	Clear	0.76	0.01	Clear	14.15	0.24	Clear	1.92	0.03	Clear	-	-	-	-	-	-	-	-	15.52	0.26	plg installed, sump pumped out	924.81	
08-May-97	3.60	0.06	Clear	0.79	0.01	Clear	14.85	0.25	Clear	1.95	0.03	Clear	-	-	-	-	-	-	-	-	20.43	0.34	plg out, pumped down	925.86	
13-May-97	4.04	0.07	Clear	0.77	0.01	Clear	17.09	0.28	Clear	1.85	0.03	Clear	-	-	-	-	-	-	-	-	21.63	0.36	plg out, pumped down	926.43	
20-May-97	4.11	0.07	Clear	0.80	0.01	Clear	15.71	0.26	Clear	1.87	0.03	Clear	-	-	-	-	-	-	-	-	23.82	0.40	plg out, pumped down	926.20	
28-May-97	3.98	0.07	Clear	0.82	0.01	Clear	18.35	0.31	Clear	1.89	0.03	Clear	-	-	-	-	-	-	-	-	22.37	0.37	plg out, pumped down	926.25	
10-Jun-97	4.15	0.07	Clear	0.78	0.01	Clear	19.93	0.33	Clear	1.85	0.03	Clear	-	-	-	-	-	-	-	-	25.21	0.42	plg out, pumped down	926.34	
17-Jun-97	4.10	0.07	Clear	0.84	0.01	Clear	17.24	0.29	Clear	1.83	0.03	Clear	-	-	-	-	-	-	-	-	26.66	0.44	plg out, pumped down	926.40	
24-Jun-97	3.97	0.07	Clear	0.72	0.01	Clear	14.72	0.25	Clear	1.73	0.03	Clear	-	-	-	-	-	-	-	-	23.88	0.40	plg out, pumped down	926.39	
01-Jul-97	3.93	0.07	Clear	0.72	0.01	Clear	18.07	0.30	Clear	1.88	0.03	Clear	-	-	-	-	-	-	-	-	21.07	0.35	plg out, pumped down	926.38	
08-Jul-97	4.05	0.07	Clear	0.88	0.01	Clear	15.38	0.26	Clear	2.24	0.04	Clear	-	-	-	-	-	-	-	-	24.72	0.41	plg out, pumped down	926.39	
15-Jul-97	4.11	0.07	Clear	0.91	0.02	Clear	15.83	0.26	Clear	2.05	0.03	Clear	-	-	-	-	-	-	-	-	22.61	0.38	plg out, pumped down	926.57	
22-Jul-97	4.06	0.07	Clear	0.85	0.01	Clear	20.48	0.34	Clear	2.11	0.04	Clear	-	-	-	-	-	-	-	-	22.85	0.38	plg out, pumped down	926.66	
29-Jul-97	4.40	0.07	Clear	0.79	0.01	Clear	18.35	0.31	Clear	1.97	0.03	Clear	-	-	-	-	-	-	-	-	27.84	0.46	plg out, pumped down	926.73	
05-Aug-97	4.13	0.07	Clear	0.78	0.01	Clear	24.19	0.40	Clear	2.02	0.03	Clear	-	-	-	-	-	-	-	-	25.24	0.42	plg out, pumped down	926.75	
13-Aug-97	4.12	0.07	Clear	0.76	0.01	Clear	15.95	0.27	Clear	1.80	0.03	Clear	-	-	-	-	-	-	-	-	31.11	0.52	plg out, pumped down	926.82	
20-Aug-97	4.13	0.07	Clear	0.76	0.01	Clear	18.75	0.31	Clear	1.92	0.03	Clear	-	-	-	-	-	-	-	-	22.64	0.38	plg out, pumped down	926.75	
26-Aug-97	4.62	0.08	Clear	0.76	0.01	Clear	16.95	0.28	Clear	1.76	0.03	Clear	-	-	-	-	-	-	-	-	26.05	0.43	plg out, pumped down	926.86	
03-Sep-97	4.48	0.07	Clear	0.75	0.01	Clear	16.04	0.27	Clear	1.81	0.03	Clear	-	-	-	-	-	-	-	-	23.95	0.40	plg out, pumped down	926.93	
09-Sep-97	4.57	0.08	Clear	0.77	0.01	Clear	16.71	0.28	Clear	1.78	0.03	Clear	-	-	-	-	-	-	-	-	23.17	0.39	plg out, pumped down	926.71	
17-Sep-97	4.62	0.08	Clear	0.78	0.01	Clear	17.75	0.30	Clear	1.83	0.03	Clear	-	-	-	-	-	-	-	-	23.88	0.40	plg out, pumped down	926.88	
23-Sep-97	4.64	0.08	Clear	0.82	0.01	Clear	16.76	0.28	Clear	1.86	0.03	Clear	-	-	-	-	-	-	-	-	25.00	0.42	plg out, pumped down	926.85	
02-Oct-97	4.78	0.08	Clear	0.81	0.01	Clear	16.01	0.27	Clear	1.95	0.03	Clear	-	-	-	-	-	-	-	-	24.22	0.40	plg out, pumped down	926.92	0.055
09-Oct-97	4.69	0.08	Clear	1.11	0.02	Clear	17.86	0.30	Clear	2.31	0.04	Clear	-	-	-	-	-	-	-	-	23.46	0.39	plg out, pumped down	926.97	0.065
16-Oct-97	5.14	0.09	Clear	0.92	0.02	Clear	16.23	0.27	Clear	1.98	0.03	Clear	-	-	-	-	-	-	-	-	26.42	0.44	plg out, pumped down	927.06	0.095
24-Oct-97	5.13	0.09	Clear	1.20	0.02	Clear	17.70	0.30	Clear	2.39	0.04	Clear	-	-	-	-	-	-	-	-	24.26	0.40	plg out, pumped down	927.23	0.095
06-Nov-97	5.51	0.09	Clear	0.65	0.01	Clear	18.58	0.31	Clear	1.87	0.03	Clear	-	-	-	-	-	-	-	-	26.80	0.46	plg out, pumped down	927.51	Frozen
13-Nov-97	4.90	0.08	Clear	0.76	0.01	Clear	17.91	0.30	Clear	1.79	0.03	Clear	-	-	-	-	-	-	-	-	26.00	0.43	plg out, pumped down	927.60	Frozen
21-Nov-97	4.37	0.07	Clear	0.77	0.01	Clear	18.18	0.30	Clear	1.85	0.03	Clear	-	-	-	-	-	-	-	-	24.83	0.41	plg out, pumped down	927.63	Frozen
28-Nov-97	4.14	0.07	Clear	0.85	0.01	Clear	17.67	0.29	Clear	1.78	0.03	Clear	-	-	-	-	-	-	-	-	24.94	0.42	plg out, pumped down	927.65	Frozen
04-Dec-97	4.03	0.07	Clear	0.74	0.01	Clear	16.30	0.27	Clear	1.73	0.03	Clear	-	-	-	-	-	-	-	-	24.33	0.41	plg out, pumped down	927.75	Frozen
02-Jan-98	3.81	0.06	Clear	0.80	0.01	Clear	18.57	0.28	Clear	1.77	0.03	Clear	-	-	-	-	-	-	-	-	22.58	0.38	plg out, pumped down	928.10	Frozen
14-Jan-98	3.85	0.06	Clear	0.74	0.01	Clear	16.42	0.27	Clear	1.82	0.03	Clear	-	-	-	-	-	-	-	-	22.99	0.38	plg out, needs pumping	928.25	Frozen
21-Jan-98	3.57	0.06	Clear	0.67	0.01	Clear	15.54	0.26	Clear	1.52	0.03	Clear	-	-	-	-	-	-	-	-	22.55	0.38	plg out, needs pumping	928.30	Frozen
08-Apr-98	3.84	0.06	Clear	0.69	0.01	Clear	15.58	0.26	Clear	1.37	0.02	Clear	6.33	0.11	Clear	-	-	-	-	-	21.57	0.36			



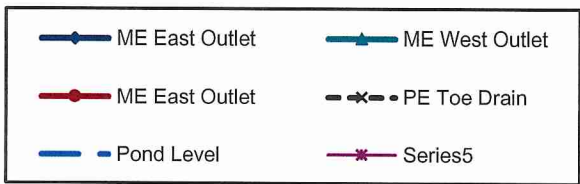
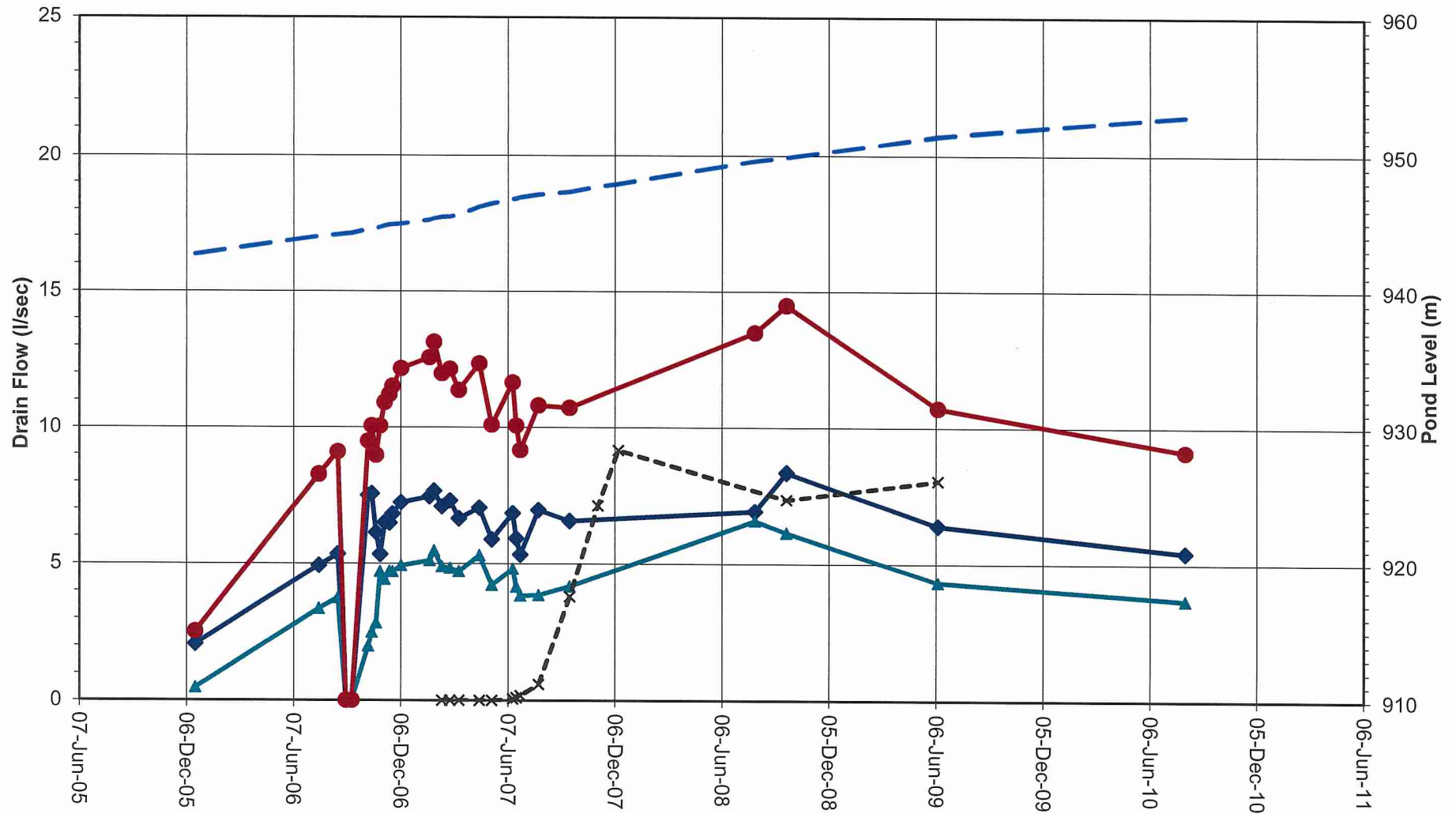
MOUNT POLLEY MINING CORPORATION
 MOUNT POLLEY MINE
 TAILINGS STORAGE FACILITY
 MAIN EMBANKMENT
 FOUNDATION DRAIN FLOWS

TABLE 3.2

MOUNT POLLEY MINING CORPORATION
MOUNT POLLEY MINE

MAIN EMBANKMENT SEEPAGE COLLECTION POND - SUMMARY OF UPSTREAM TOE DRAIN FLOW DATA

Date	Pond El. (m)	MAIN EMBANKMENT					PERIMETER EMBANKMENT				SOUTH EMBANKMENT		TOTAL FLOW RATE		Comments		
		EAST OUTLET		WEST OUTLET		TOTAL	NORTH OUTLET		SOUTH OUTLET		UPSTREAM TOE DRAIN					TOE DRAIN	
		Flow Rate (l/min)	Flow Rate (l/sec)	Flow Rate (l/min)	Flow Rate (l/sec)	Flow Rate (l/sec)	Flow Rate (l/min)	Flow Rate (l/sec)	Flow Rate (l/min)	Flow Rate (l/sec)	Flow Rate (l/min)	Flow Rate (l/sec)	Flow Rate (l/min)	Flow Rate (l/sec)		Tot(l/min)	Tot(l/sec)
20-Jul-00	938.08	98	1.64	44	0.74	2.38	-	N/A	4.0	0.07	-	-	-	-	147	2.45	First Reading
25-Jul-00	938.10	85	1.42	43	0.71	2.13	-	N/A	3.8	0.06	-	-	-	-	132	2.88	
24-Oct-00	938.25	64	1.07	56	0.94	2.01	-	N/A	N/A	N/A	-	-	-	-	121	2.01	
16-Nov-00	938.52	65	1.09	62	1.03	2.12	-	N/A	N/A	N/A	-	-	-	-	127	2.12	
21-Dec-05	942.64	123	2.05	28	0.46	2.51	-	N/A	N/A	N/A	-	-	-	-	151	2.51	
20-Jul-06	943.95	296	4.93	200	3.34	8.27	-	N/A	N/A	N/A	-	-	-	-	496	8.27	
21-Aug-06	944.09	321	5.35	224	3.74	9.09	5.3	0.09	5.3	0.09	-	-	-	-	556	9.26	
04-Sep-06	944.16	N/A	N/A	N/A	N/A	#VALUE!	4.8	0.08	4.8	0.08	-	-	-	-			est 50% for N & S
14-Sep-06	944.19	N/A	N/A	N/A	N/A	#VALUE!	4.8	0.08	64.8	1.08	-	-	-	-			est 50% for N & S
12-Oct-06	944.48	451	7.51	119	1.98	9.49	-	-	-	-	-	-	-	569	9.49	used air exchanger (good reading)	
18-Oct-06	944.50	454	7.57	149	2.49	10.05	-	-	-	-	-	-	-	603	10.05	used air exchanger (good reading)	
25-Oct-06	944.55	368	6.14	170	2.83	8.96	4.8	0.08	4.2	0.07	-	-	-	547	9.11		
01-Nov-06	944.65	320	5.34	282	4.71	10.05	4.9	0.08	4.4	0.07	-	-	-	612	10.20		
09-Nov-06	944.75	390	6.50	265	4.41	10.91	Flows from PE monitoring sump				-	-	655	10.91			
17-Nov-06	944.83	389	6.49	283	4.72	11.21	- not upstream toe drain flows				-	-	672	11.21			
22-Nov-06	944.86	409	6.81	282	4.70	11.51	-	-	-	-	-	-	-	690	11.51		
07-Dec-06	944.91	434	7.24	295	4.92	12.16	-	-	-	-	-	-	-	730	12.16	Tailings Discharge on PE (CH 41+00). See monthly beach locations	
24-Jan-07	945.20	448	7.46	307	5.11	12.57	-	-	-	-	-	-	-	754	12.57	Tailings Discharge on PE (CH 31+00).	
01-Feb-07	945.31	460	7.67	328	5.47	13.14	-	-	-	-	-	-	-	788	13.14		
14-Feb-07	945.42	425	7.09	293	4.89	11.98	-	-	0	0.00	-	-	-	719	11.98		
28-Feb-07	945.47	439	7.31	290	4.83	12.15	-	-	0	0.00	-	-	-	729	12.15		
15-Mar-07	945.60	399	6.64	283	4.72	11.36	-	-	0	0.00	-	-	-	682	11.36		
19-Apr-07	946.20	423	7.04	318	5.31	12.35	-	-	0	0.00	-	-	-	741	12.35		
10-May-07	946.44	353	5.88	253	4.21	10.09	-	-	0	0.00	-	-	-	605	10.09		
15-Jun-07	946.75	410	6.84	289	4.81	11.65	-	-	4	0.06	-	-	-	702	11.71		
21-Jun-07	946.80	355	5.92	248	4.14	10.06	-	-	6	0.10	-	-	-	610	10.16		
28-Jun-07	946.90	320	5.33	229	3.82	9.15	-	-	11	0.18	-	-	-	560	9.33		
29-Jul-07	947.10	418	6.96	231	3.84	10.81	-	-	35	0.59	-	-	-	684	11.39		
20-Sep-07	947.30	394	6.57	250	4.16	10.73	-	-	228	3.80	-	-	-	872	14.53		
07-Nov-07	947.70						-	-	428	7.13	-	-	-	428	7.13	Main Embankment Upstream toe drain flow not taken	
12-Dec-07	947.90						-	-	549	9.15	-	-	-	549	9.15	Main Embankment Upstream toe drain flow not taken	
01-Aug-08	949.60	415	6.92	395	6.58	13.50	-	-	-	-	-	-	-	810	13.50	PE Upstream toe drain flow not taken	
24-Sep-08	949.89	501	8.35	368	6.14	14.49	-	-	442	7.36	-	-	-	1311	21.85		
09-Jun-09	951.45	384	6.40	260	4.33	10.73	-	-	483	8.05	-	-	-	1127	18.78		
05-Aug-10	952.90	326	5.43	221	3.68	9.12	-	-	-	-	-	-	-	547	9.12	PE Upstream toe drain flow not taken	
05-Jul-11							-	-	1200	20.00	-	-	-	2400	40.00		
03-Aug-11							-	-	1422	23.70	-	-	-	3664	64.40		
25-Aug-11							-	-	1110	18.50	-	-	-	2461	41.01		
15-Sep-11							-	-	996	16.60	-	-	-	2310	38.50		
29-Sep-11							-	-	-	-	-	-	-	1464	24.40		
06-Oct-11							-	-	972	16.20	-	-	-	972	16.20		
27-Oct-11							-	-	-	-	-	-	-	1470	24.50		
27-Nov-11							-	-	1662	27.70	-	-	-	1662	27.70		
12-May-12							-	-	1422	23.70	-	-	-	1422	23.70		
17-May-12							-	-	-	-	-	-	-	978	16.30		
06-Jun-12							-	-	-	-	-	-	-	1704	28.40		
14-Jun-12							-	-	1308	21.80	-	-	-	1308	21.80		
05-Jul-12							-	-	1536	25.60	-	-	-	1536	25.60		
11-Jul-12							-	-	-	-	-	-	-	2154	35.90		
24-Jul-12							-	-	-	-	-	-	-	1608	26.80		
26-Jul-12							-	-	2424	40.40	-	-	-	2424	40.40		
09-Aug-12							-	-	-	-	-	-	-	2862	47.70		
14-Aug-12							-	-	918	15.30	-	-	-	918	15.30		
31-Aug-12							-	-	-	-	-	-	-	1836	30.60		
05-Sep-12							-	-	-	-	-	-	-	2112	35.20		
26-Sep-12							-	-	-	-	-	-	-	1866	31.10		
04-Oct-12							-	-	1392	23.20	-	-	-	1392	23.20		
24-Oct-12							-	-	-	-	-	-	-	1044	17.40		
25-Oct-12							-	-	2046	34.10	-	-	-	2046	34.10		
20-Nov-12							-	-	2124	35.40	-	-	-	2124	35.40		
22-Apr-13							-	-	5460	91.00	-	-	-	9000	150.00		
23-May-13							-	-	1494	24.90	-	-	-	4020	67.00		
18-Jun-13							-	-	1494	24.90	-	-	-	1494	24.90		
19-Jun-13							-	-	-	-	-	-	-	2454	40.90		
18-Jul-13							-	-	984	16.40	-	-	-	2442	40.70		
08-Aug-13		239	3.99	100	1.66	5.65	-	-	-	-	-	-	-	339	5.65		
13-Aug-13							-	-	-	-	-	-	-	3162	52.70		
19-Aug-13							-	-	1794	29.90	-	-	-	1794	29.90		
17-Oct-13							-	-	-	-	-	-	-	3012	50.20		
12-Nov-13		269	4.48				-	-	-	-	-	-	-	269	4.48		
14-Nov-13							-	-	-	-	-	-	-	3504	58.40		
19-Feb-14		251	4.19	120	2.00	6.19	-	-	-	-	-	-	-	371	6.19		



MOUNT POLLEY MINING CORPORATION
 MOUNT POLLEY MINE
 TAILINGS STORAGE FACILITY
 UPSTREAM TOE DRAIN FLOWS

MOUNT POLLEY MINING CORPORATION
MOUNT POLLEY PROJECT
TAILINGS STORAGE FACILITY
PERIMETER EMBANKMENT OUTLET DRAIN FLOWS

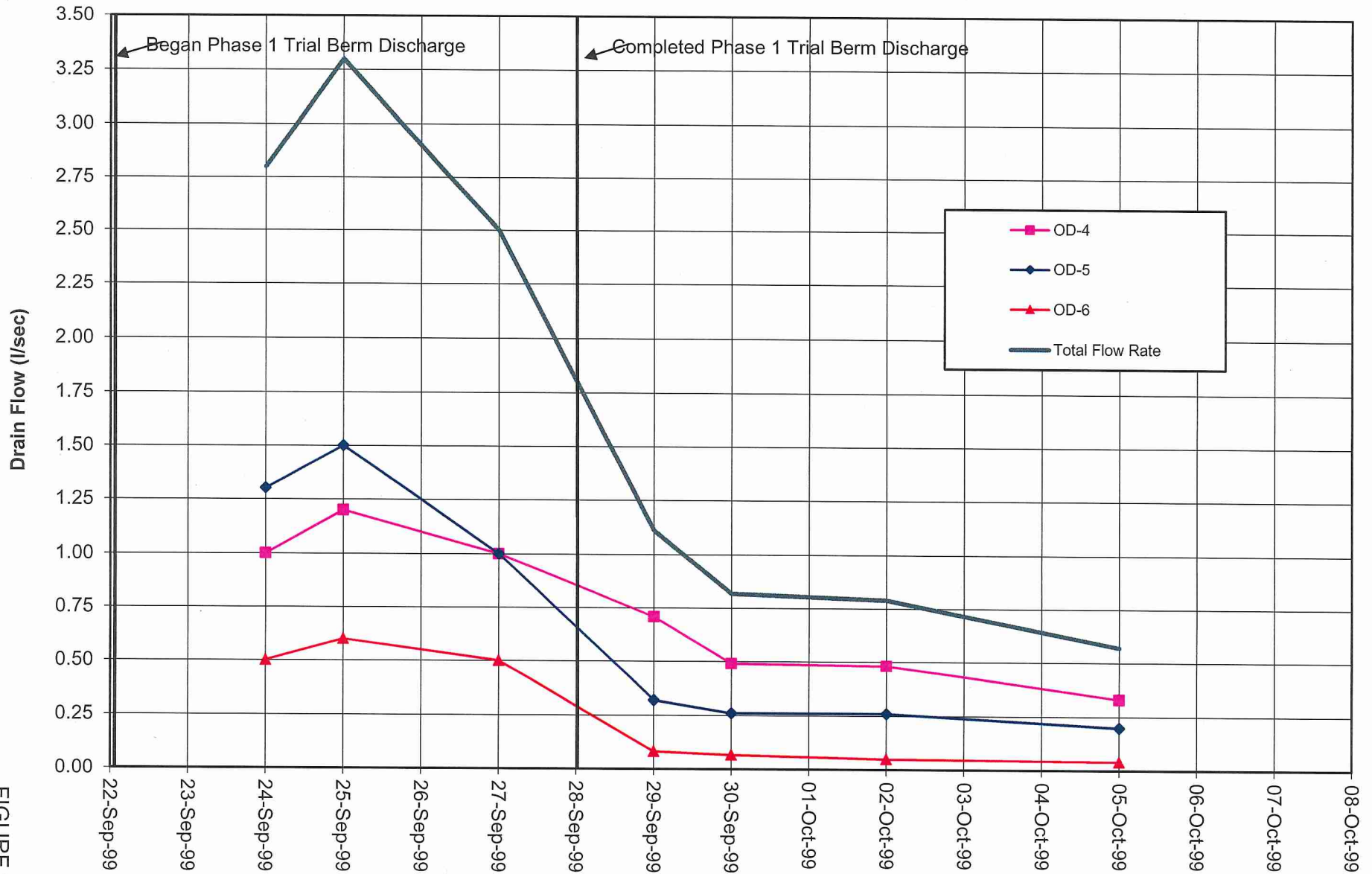


FIGURE 21