

14795-MTP0/01

MP00105



MOUNT POLLEY MINING CORPORATION

A DIVISION OF IMPERIAL METALS CORPORATION

September 25, 1998.

Mr. George Headley
Senior Geotechnical Engineer
Mine Review and Permitting Branch
Ministry of Energy and Mines
4th Floor, 1810 Blanchard Street,
Victoria, B.C.
V8V-1X4

Re: Mount Polley Stage 2B TSF 936-937 Elevation Embankment Raise Construction

Further to our telephone conversation of September 22, please accept this letter in application for permission to proceed with the above construction.

Previously, we had scheduled an upstream raise from 936 to 939 Elevation, similar to the 2A raise just completed this past spring, for this winter. Due to our lack of confidence in weather, we have decided to construct a 1 metre cap portion of this raise this fall.

Our Water Balance indicates that 1999 freshet will push the pond elevation to 934.5 elevation, encroaching on the 24 hour PMP and 1metre run-up freeboard requirement of 1.5 metres, with our current crest elevation of 936 metres. (See attached Filling Schedule.) We, therefore require additional crest prior to run-off, and are more confident doing this work during good weather. The completion of Stage 2 construction, to 939 or 940 elevation, would be accomplished during the summer months of 1999.

The Knight Piesold drawings show the geometry of the proposed construction., and I have attached reduced copies for your perusal.

Existing permits, amended with Knight Piesold's "Report on Ongoing Construction Requirements, December 2, 1997.", allow construction to Stage 2 Elevation 940.

Consistent with our established protocol, Knight Piesold will be present on site to assure and control the quality of construction materials and to ensure that compaction requirements are met.

The construction will start late this week, and is expected to last approximately 25 days.

Please call if you have any questions or concerns.

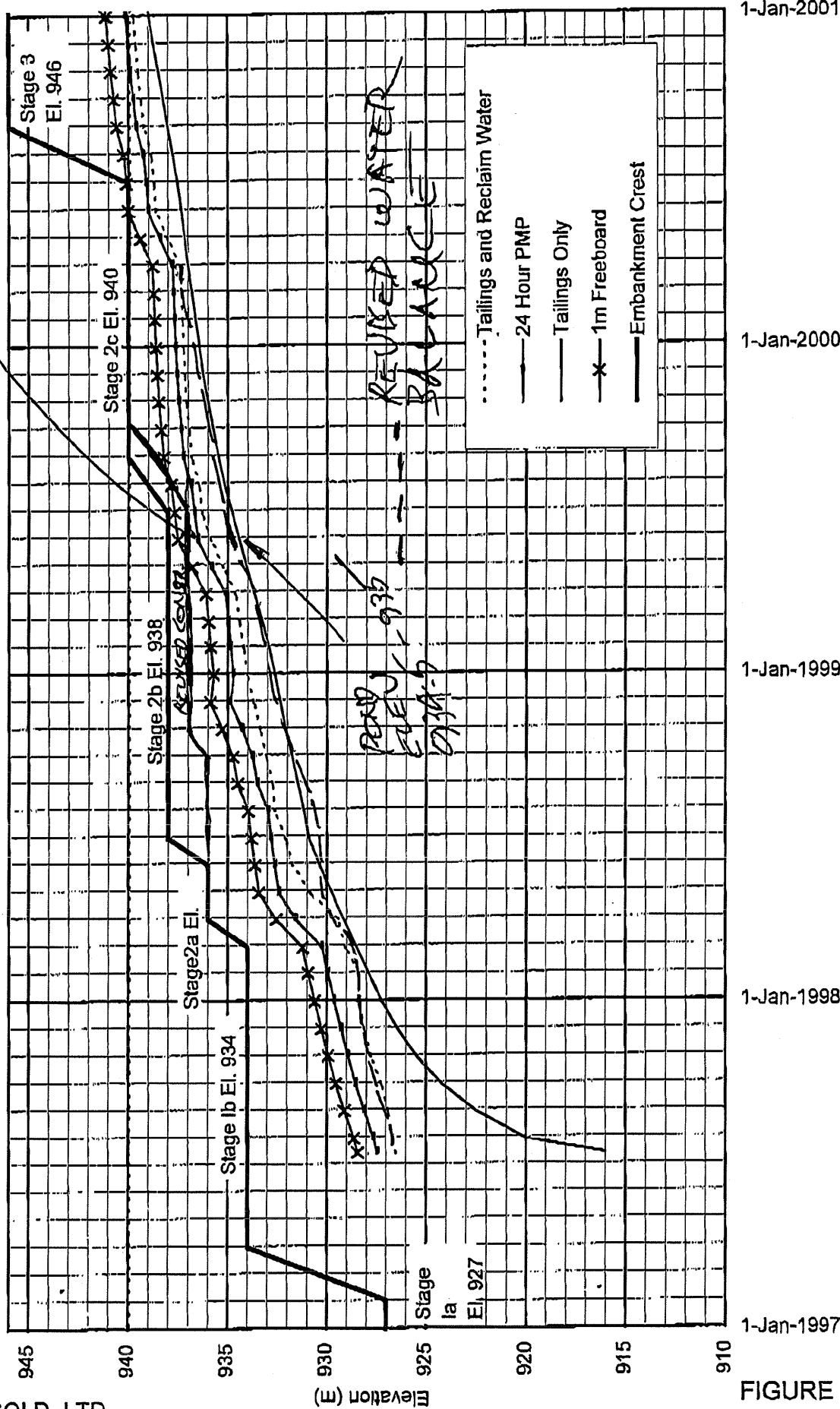
Sincerely:

Eric LeNeve
Senior Engineering Technologist.

BY FAX SEPT 25/98
250-952-0481

MOUNT POLLEY MINING CORP.
MOUNT POLLEY MINE
TAILINGS STORAGE FACILITY
FILLING SCHEDULE AND STAGED CONSTRUCTION

*MAY 31/98
 NEED 937 CREST*



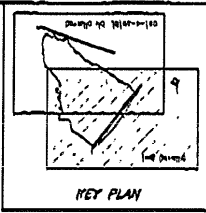
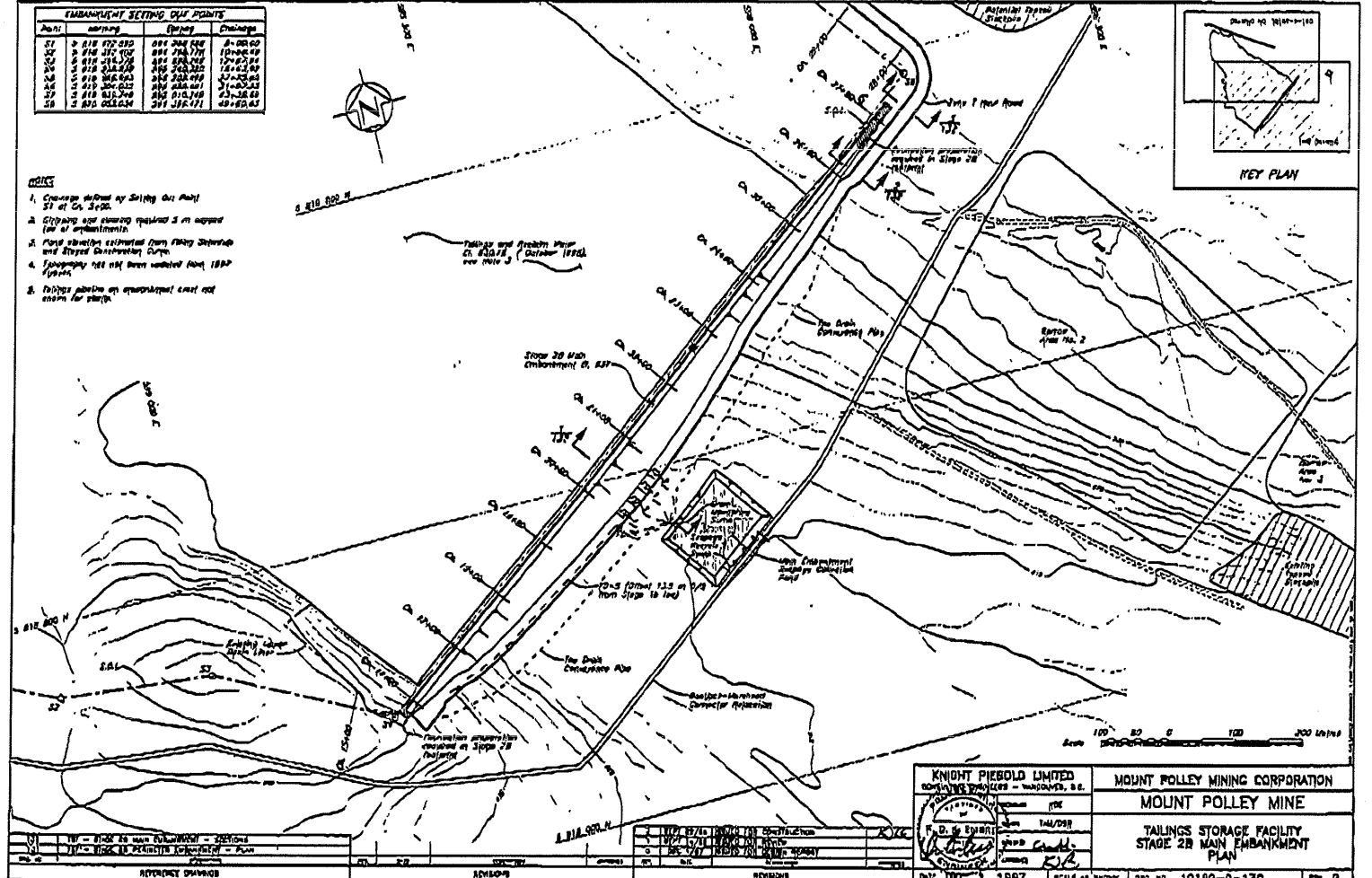
KNIGHT PIESOLD LTD.
 CONSULTING ENGINEERS

FIGURE 2

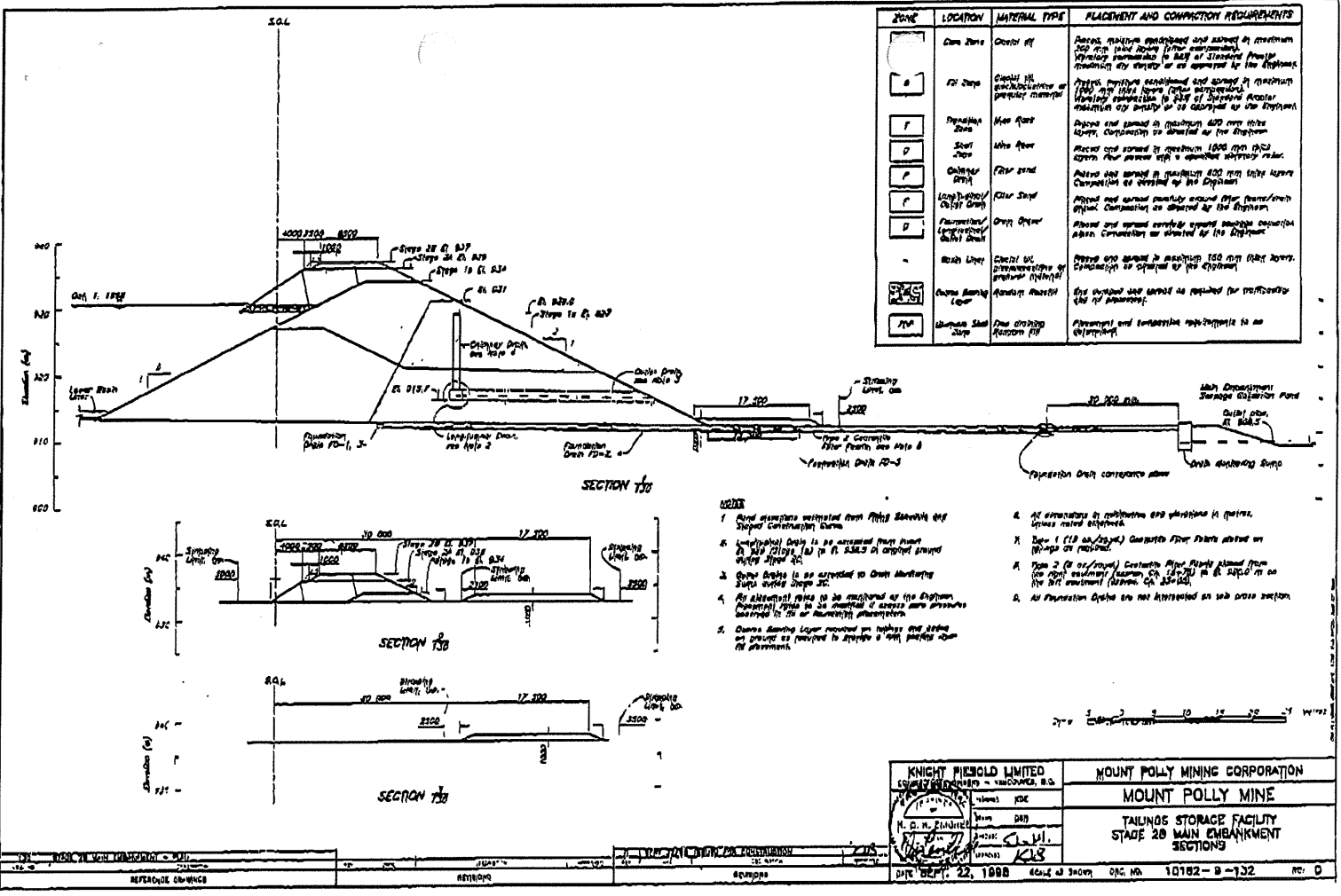
C:\MOUNTPOLLEY\DRAWING\FIG2.MXD 21/05/98 10:25:09

EMBANKMENT SETTING DAT POINTS			
Point	Northing	Easting	Change
21	810 772.820	814 200.000	8-000.00
22	810 775.100	814 210.777	10-000.00
23	810 781.270	814 220.777	12-000.00
24	810 787.500	814 230.777	14-000.00
25	810 793.770	814 240.777	16-000.00
26	810 800.000	814 250.777	18-000.00
27	810 806.270	814 260.777	20-000.00
28	810 812.500	814 270.777	22-000.00
29	810 818.770	814 280.777	24-000.00
30	810 825.000	814 290.777	26-000.00

- NOTES**
1. Contours derived by setting out Point 51 of Co. 3/90.
 2. Sloping area showing required 3 m gradient (see 4th embankment).
 3. Final elevation estimated from filling Schedule and Stage Construction Curve.
 4. Topography 100 m has been updated from 1997 datum.
 5. Dotted outline an approximate limit and extent for stage.



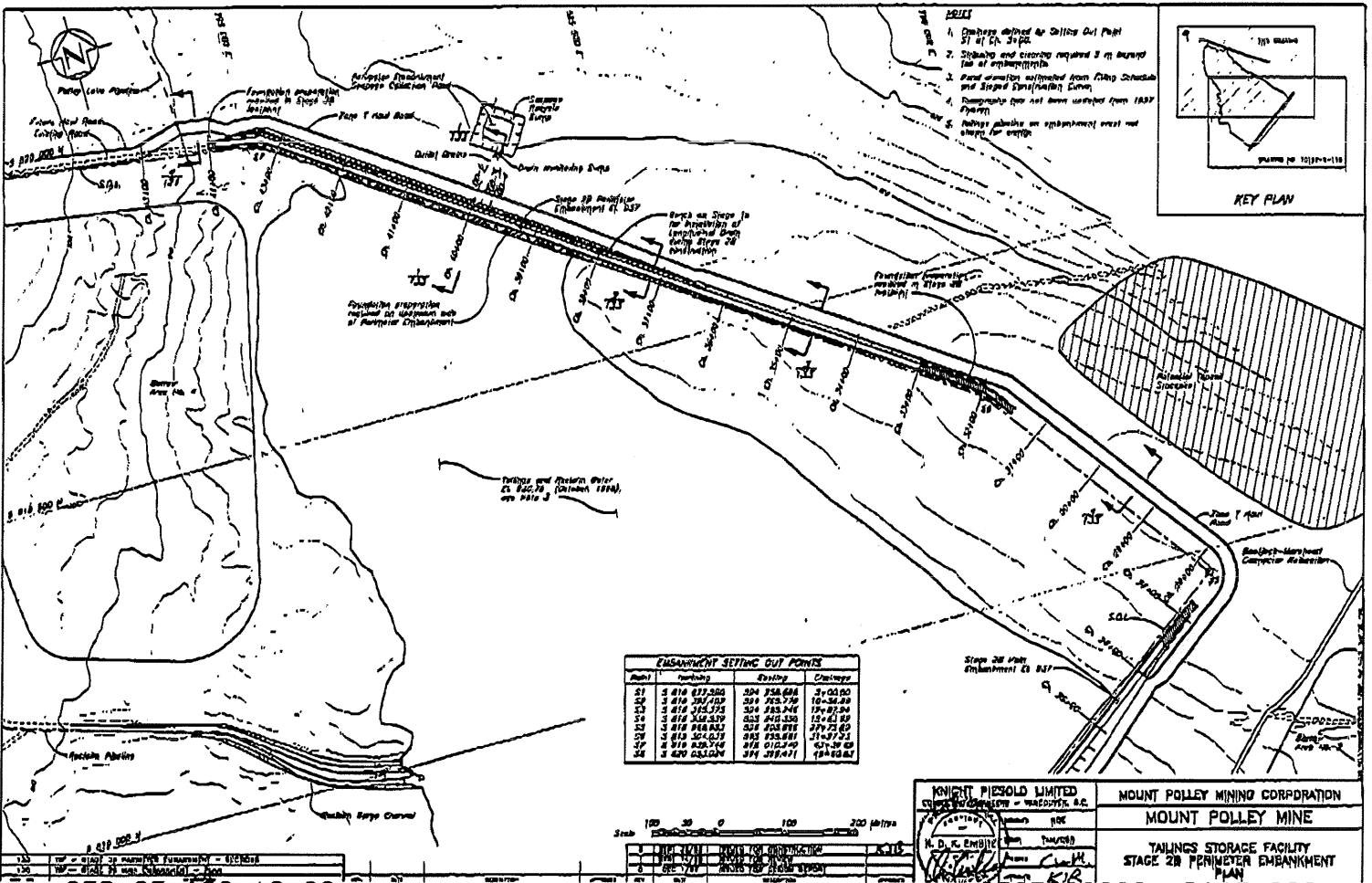
KNIGHT PIERBOLD LIMITED COMPANY ENGINEERS - WASHINGTON, D.C. PROJECT NO. 144/298 DATE: DEC. 1, 1997 SCALE: AS SHOWN SHEET NO. 10182-0-130	MOUNT POLLEY MINING CORPORATION MOUNT POLLEY MINE
	TAILINGS STORAGE FACILITY STAGE 2B MAIN EMBANKMENT PLAN



ZONE	LOCATION	MATERIAL TYPE	PLACEMENT AND COMPACTION REQUIREMENTS
1	Core Zone	Crusher Eff	Place, machine equipped and compact in maximum 100 mm (4 in) layers (from construction) starting immediately to 50% of designed final elevation of embankment as approved by the Engineer.
2	FD Step	Crusher Eff	Place, machine equipped and compact in maximum 100 mm (4 in) layers (from construction) starting immediately to 50% of designed final elevation of embankment as approved by the Engineer.
3	Protection Zone	Min. Sp. 1	Place and compact in maximum 100 mm (4 in) layers. Compaction as directed by the Engineer.
4	Shell Zone	Min. Sp. 2	Place and compact in maximum 100 mm (4 in) layers. Compaction as directed by the Engineer.
5	Crusher Eff	Crusher Eff	Place and compact in maximum 100 mm (4 in) layers. Compaction as directed by the Engineer.
6	Long-Duration Crusher Eff	Crusher Eff	Place and compact in maximum 100 mm (4 in) layers. Compaction as directed by the Engineer.
7	Crusher Eff	Crusher Eff	Place and compact in maximum 100 mm (4 in) layers. Compaction as directed by the Engineer.
8	Crusher Eff	Crusher Eff	Place and compact in maximum 100 mm (4 in) layers. Compaction as directed by the Engineer.
9	Crusher Eff	Crusher Eff	Place and compact in maximum 100 mm (4 in) layers. Compaction as directed by the Engineer.
10	Crusher Eff	Crusher Eff	Place and compact in maximum 100 mm (4 in) layers. Compaction as directed by the Engineer.
11	Crusher Eff	Crusher Eff	Place and compact in maximum 100 mm (4 in) layers. Compaction as directed by the Engineer.
12	Crusher Eff	Crusher Eff	Place and compact in maximum 100 mm (4 in) layers. Compaction as directed by the Engineer.
13	Crusher Eff	Crusher Eff	Place and compact in maximum 100 mm (4 in) layers. Compaction as directed by the Engineer.
14	Crusher Eff	Crusher Eff	Place and compact in maximum 100 mm (4 in) layers. Compaction as directed by the Engineer.
15	Crusher Eff	Crusher Eff	Place and compact in maximum 100 mm (4 in) layers. Compaction as directed by the Engineer.
16	Crusher Eff	Crusher Eff	Place and compact in maximum 100 mm (4 in) layers. Compaction as directed by the Engineer.
17	Crusher Eff	Crusher Eff	Place and compact in maximum 100 mm (4 in) layers. Compaction as directed by the Engineer.
18	Crusher Eff	Crusher Eff	Place and compact in maximum 100 mm (4 in) layers. Compaction as directed by the Engineer.
19	Crusher Eff	Crusher Eff	Place and compact in maximum 100 mm (4 in) layers. Compaction as directed by the Engineer.
20	Crusher Eff	Crusher Eff	Place and compact in maximum 100 mm (4 in) layers. Compaction as directed by the Engineer.

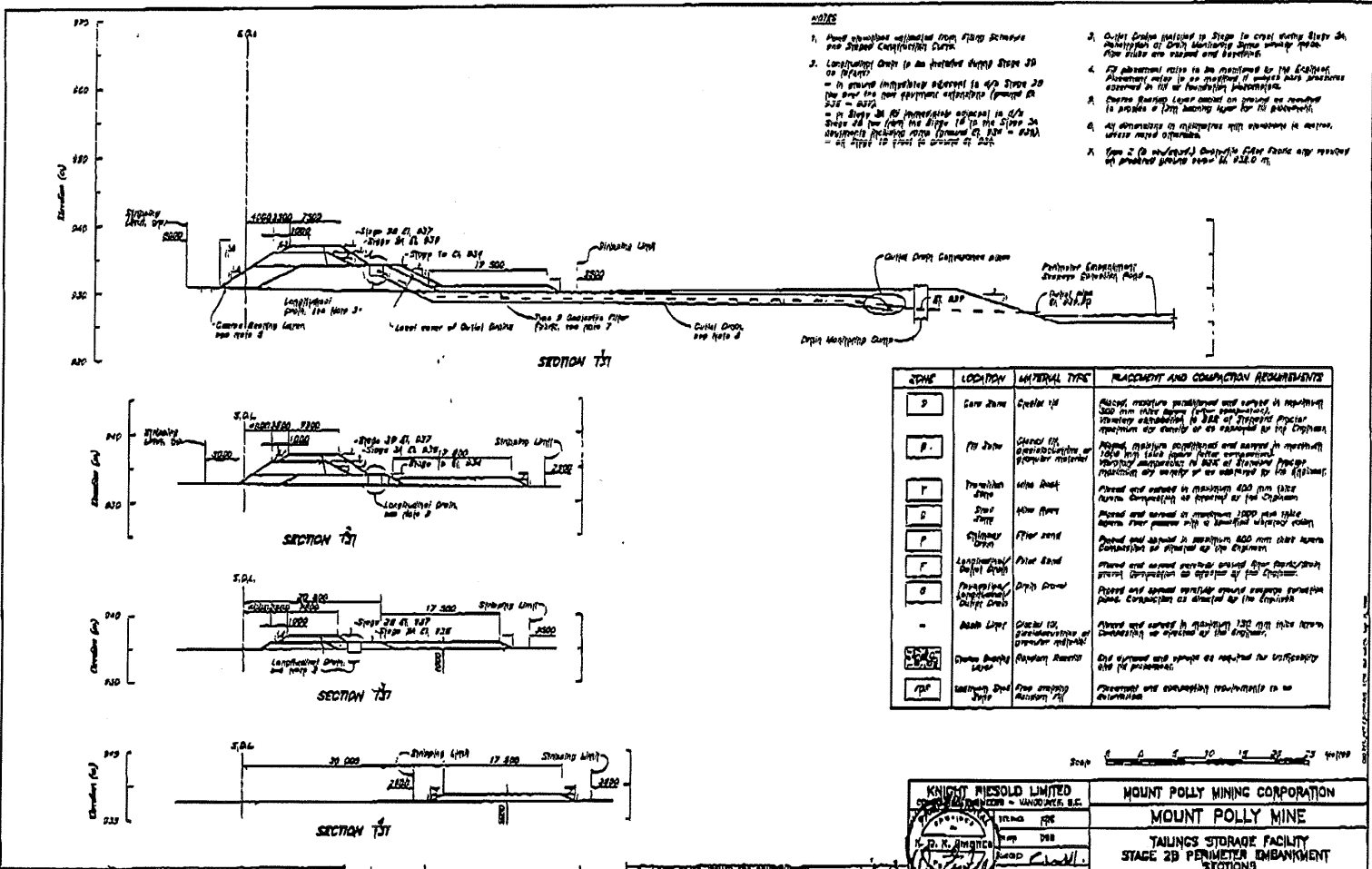
- NOTES
1. All dimensions indicated from Right Shoulder and Slope Construction Curve.
 2. All dimensions of embankment and structures in feet, unless noted otherwise.
 3. All dimensions of structures and structures in feet, unless noted otherwise.
 4. All dimensions of structures and structures in feet, unless noted otherwise.
 5. All dimensions of structures and structures in feet, unless noted otherwise.
 6. All dimensions of structures and structures in feet, unless noted otherwise.
 7. All dimensions of structures and structures in feet, unless noted otherwise.
 8. All dimensions of structures and structures in feet, unless noted otherwise.
 9. All dimensions of structures and structures in feet, unless noted otherwise.
 10. All dimensions of structures and structures in feet, unless noted otherwise.
 11. All dimensions of structures and structures in feet, unless noted otherwise.
 12. All dimensions of structures and structures in feet, unless noted otherwise.
 13. All dimensions of structures and structures in feet, unless noted otherwise.
 14. All dimensions of structures and structures in feet, unless noted otherwise.
 15. All dimensions of structures and structures in feet, unless noted otherwise.
 16. All dimensions of structures and structures in feet, unless noted otherwise.
 17. All dimensions of structures and structures in feet, unless noted otherwise.
 18. All dimensions of structures and structures in feet, unless noted otherwise.
 19. All dimensions of structures and structures in feet, unless noted otherwise.
 20. All dimensions of structures and structures in feet, unless noted otherwise.

	KNIGHT PILEOLD LIMITED	MOUNT POLLY MINING CORPORATION
	ENGINEERS - MINING, E.C.	MOUNT POLLY MINE
		TAILINGS STORAGE FACILITY
SEP 22, 1988	SEP 22, 1988	STAGE 20 MAIN EMBANKMENT SECTIONS



Point	Stationing	Easting	Northing
21	5+810.00	524.258	3+000.00
22	5+810.00	524.258	3+000.00
23	5+810.00	524.258	3+000.00
24	5+810.00	524.258	3+000.00
25	5+810.00	524.258	3+000.00
26	5+810.00	524.258	3+000.00
27	5+810.00	524.258	3+000.00
28	5+810.00	524.258	3+000.00

KNIGHT PIESOLD LIMITED
 CONSULTING ENGINEERS - WARRICK, N.S.W.
 MOUNT POLLEY MINING CORPORATION
 MOUNT POLLEY MINE
 TAILINGS STORAGE FACILITY
 STAGE 2B PERIMETER EMBANKMENT
 PLAN



- NOTES**
1. All dimensions are nominal from 1980 Schedule and 1980 Construction Code.
 2. Construction Code is the minimum slope 3:1 on 2:1.
 3. In areas immediately adjacent to 4:1 slope 2:1 the top of the new pavement structure (paved at 2:1 = 2:1).
 4. In areas 3:1 or immediately adjacent to 2:1 slope 2:1 the top of the slope is to be 2:1 in 2:1.
 5. All dimensions in this drawing are nominal, unless noted otherwise.
 6. Item 2 (a) subpart (1) details are to be used in areas of finished ground over 10' 0" 2:1.

SYMBOL	LOCATION	MATERIAL TYPE	PLACEMENT AND COMPLETION REQUIREMENTS
S	Soil Zone	Gravel 1/2"	Place and spread in maximum 4" lifts in maximum 100' from edge of embankment. Minimum settlement in 24H of 1/2" per ft. Maximum settlement in 24H of 1/2" per ft. as directed by the Engineer.
B	Top Zone	Gravel 1/2" (20% fines) or equivalent of equivalent material	Place and spread in maximum 4" lifts in maximum 100' from edge of embankment. Minimum settlement in 24H of 1/2" per ft. Maximum settlement in 24H of 1/2" per ft. as directed by the Engineer.
T	Transition Zone	1/2" Sand	Place and spread in maximum 4" lifts in maximum 100' from edge of embankment. Minimum settlement in 24H of 1/2" per ft. Maximum settlement in 24H of 1/2" per ft. as directed by the Engineer.
D	Drain Zone	1/2" Sand	Place and spread in maximum 4" lifts in maximum 100' from edge of embankment. Minimum settlement in 24H of 1/2" per ft. Maximum settlement in 24H of 1/2" per ft. as directed by the Engineer.
P	Filter Zone	1/2" Sand	Place and spread in maximum 4" lifts in maximum 100' from edge of embankment. Minimum settlement in 24H of 1/2" per ft. Maximum settlement in 24H of 1/2" per ft. as directed by the Engineer.
F	Foundation	1/2" Sand	Place and spread in maximum 4" lifts in maximum 100' from edge of embankment. Minimum settlement in 24H of 1/2" per ft. Maximum settlement in 24H of 1/2" per ft. as directed by the Engineer.
G	Gravel Zone	1/2" Sand	Place and spread in maximum 4" lifts in maximum 100' from edge of embankment. Minimum settlement in 24H of 1/2" per ft. Maximum settlement in 24H of 1/2" per ft. as directed by the Engineer.
-	Asphalt Layer	Gravel 1/2"	Place and spread in maximum 4" lifts in maximum 100' from edge of embankment. Minimum settlement in 24H of 1/2" per ft. Maximum settlement in 24H of 1/2" per ft. as directed by the Engineer.
W	Water Supply Layer	Gravel 1/2"	Place and spread in maximum 4" lifts in maximum 100' from edge of embankment. Minimum settlement in 24H of 1/2" per ft. Maximum settlement in 24H of 1/2" per ft. as directed by the Engineer.
W	Water Supply Layer	Gravel 1/2"	Place and spread in maximum 4" lifts in maximum 100' from edge of embankment. Minimum settlement in 24H of 1/2" per ft. Maximum settlement in 24H of 1/2" per ft. as directed by the Engineer.

KNIGHT RESOLVED LIMITED
 ENGINEERS - ARCHITECTS - SURVEYORS
 1000 W. 10th St.
 WINDSOR, ONT. N9A 7P8
 TEL: (519) 253-1111
 FAX: (519) 253-1112

MOUNT POLLY MINING CORPORATION
MOUNT POLLY MINE
 TAILINGS STORAGE FACILITY
 STAGE 2B PERIMETER EMBANKMENT
 SECTIONS

2507902268 PAGE.007