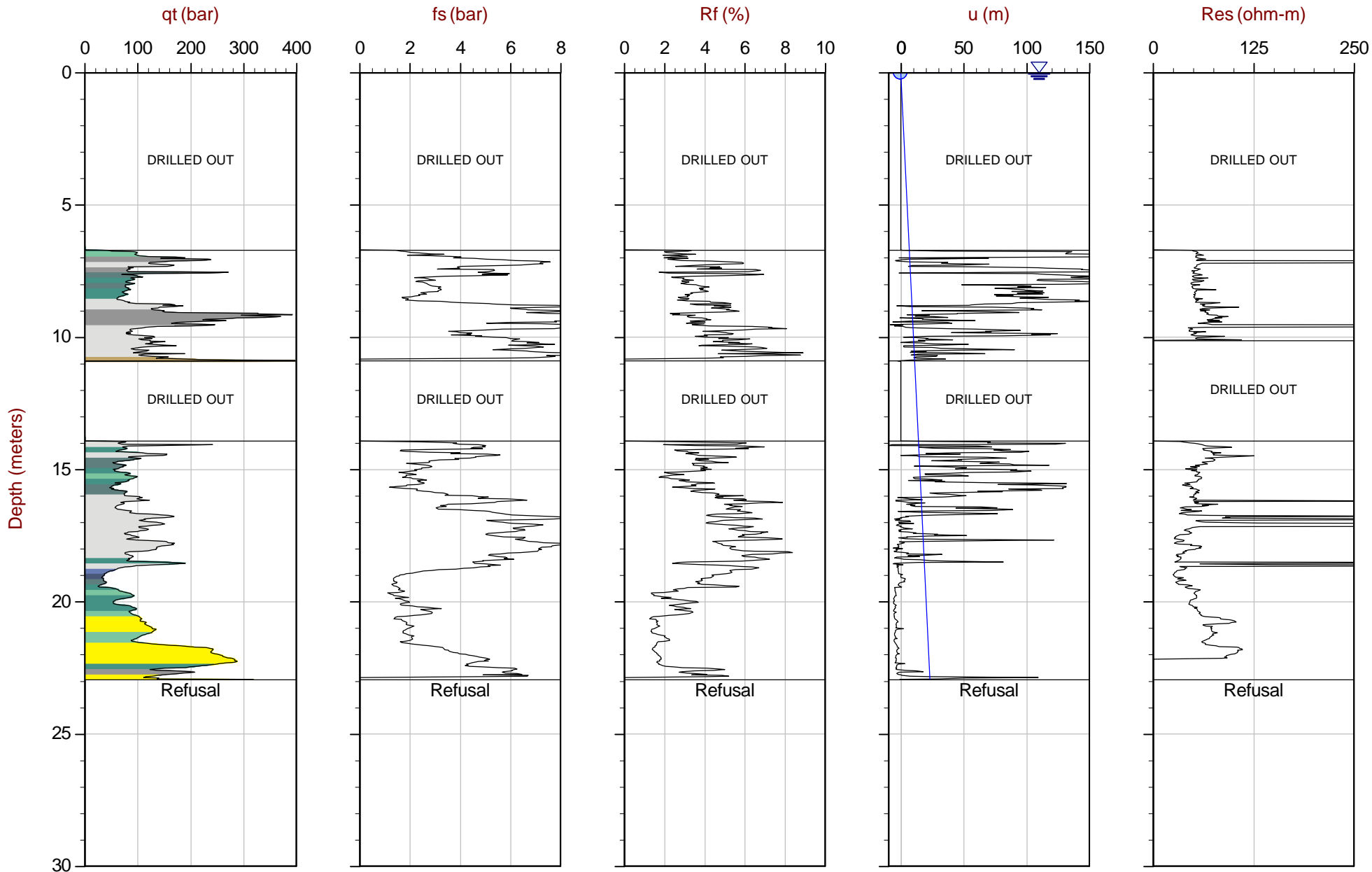




Mount Polley

Job No: 14-02091
Date: 10:31:14 09:22
Site: Mount Polley

Sounding: RSCPT14-13
Cone: 418:T1500F15U500



Max Depth: 22.950 m / 75.29 ft
Depth Inc: 0.025 m / 0.082 ft
Avg Int: 0.200m

File: 14-02091_RS13.COR
Unit Wt: SBT Chart Soil Zones

SBT: Lunne, Robertson and Powell, 1997
Coords: Tailings Grid N: 5819770.00m E: 595407.00m Elev: 933.06m
Page No: 1 of 1

Overplot Item: — Hydrostatic Line ● Assumed Ueq ● Ueq

The reported coordinates were acquired from hand-held GPS equipment and are only approximate locations. The elevation is based on adjacent borehole.